

SHERIDAN WATER SUPPLY CORPORATION

PO Box 206 * 5725 Avenue D * Sheridan, Tx. 77475 * (979)-234-7422 * sheridanwater@gmail.com
www.sheridanwater.myruralwater.com

November 9, 2023

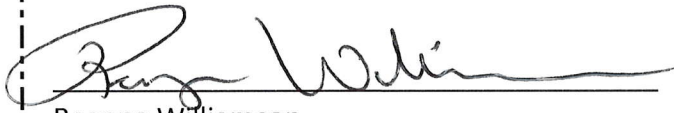
Public Utility Commission of Texas
Central Records
1701 N Congress PO Box 13326
Austin, Texas 78711-3326

Re: Tariff for Sheridan WSC, CCN No. 10987, in Colorado County

Dear Tariff Clerk:

Pursuant to Texas Water Code Section 13.136(c) and 16 TAC Section 24.25(i), enclosed is one copy of the revisions to the existing tariff for Sheridan Water Supply Corporation provided for informational purposes. The effective date of these changes in January 1, 2024.

Sincerely,



Regena Williamson

President

Sheridan Water Supply Corporation

Office Hours M-F 8-4:30

(979)-234-7422

Sheridanwater@gmail.com

www.sheridanwater.myruralwater.com

Tariff for Sheridan Water Supply Corporation

Sheridan WSC
PO Box 206
5725 Avenue D
Sheridan, TX 77475
Telephone: (979) 234-7422

sheridanwater@gmail.com
www.sheridanwater.myruralwater.com

**SHERIDAN WATER SUPPLY CORPORATION
TARIFF - 2024**

Table of Contents

Section A. Resolutions	<u>5</u>
Section B. Statements.....	<u>9</u>
Section C. Definitions.....	<u>12</u>
Section D. Geographic Area Served	<u>16</u>
Section E. Service Rules And Regulations	<u>18</u>
1. Activation of Standard Service.....	<u>18</u>
2. Activation of Nonstandard Service.	<u>18</u>
3. Applicant’s or Transferee’s Recourse.	<u>18</u>
4. Back-Billing	<u>18</u>
5. Bill Adjustment	<u>19</u>
6. Billing Cycle Changes.....	<u>19</u>
7. Changes in Service Classification	<u>19</u>
8. Charge Distribution and Payment Application.	<u>19</u>
9. Deferred Payment Agreement.....	<u>20</u>
10. Denial of Service	<u>20</u>
11. Disconnection of Service - Rules	<u>21</u>
12. Disputed Bills.....	<u>25</u>
13. Due Dates, Delinquent Bills, and Service Disconnection Date..	<u>25</u>
14. Inoperative Meters.	<u>26</u>
15. Insufficient Grounds for Refusal of Service.....	<u>26</u>
16. Line Extension Reimbursement.....	<u>26</u>
17. Master Metered Account Regulations.....	<u>26</u>
18. Members and Renters.....	<u>27</u>
19. Membership.....	<u>27</u>
20. Member’s Responsibility	<u>30</u>
21. Meter Relocation.....	<u>32</u>
22. Meter Tampering and Damage To Property.....	<u>32</u>
23. Ownership of Equipment.....	<u>33</u>
24. Prohibition of Multiple Connections to a Single Tap.....	<u>33</u>
25. Requirements for Mandatory Sewer Connection	<u>34</u>
26. Service Entitlement.....	<u>34</u>
27. Service Location and Classification.....	<u>34</u>
28. Service Requirements.....	<u>35</u>
Section F. Developer, Subdivision And Nonstandard Service Requirements	<u>37</u>
Part I. General Requirements.....	<u>37</u>
1. Purpose.....	<u>37</u>
2. Application of Rules.....	<u>37</u>

**SHERIDAN WATER SUPPLY CORPORATION
TARIFF - 2024**

3. Nonstandard Service Application.....	<u>37</u>
4. Design.....	<u>38</u>
5. Nonstandard Service Contract.....	<u>39</u>
6. Construction of Facilities by Applicant Prior to Execution of Service Contract.....	<u>40</u>
7. Dedication of Water System Extension/Improvements to Corporation.....	<u>40</u>
8. Property and Right-Of-Way Acquisition.....	<u>40</u>
9. Bids for Construction.....	<u>41</u>
10. Pre-Payment for Construction and Service.....	<u>41</u>
11. Construction.....	<u>41</u>
Part II Request For Service To Subdivided Property.....	<u>42</u>
1. Sufficient Information.....	<u>42</u>
2. Service within Subdivisions.....	<u>42</u>
3. Final Approval.....	<u>44</u>
Section G. Rates And Service Fees.....	<u>45</u>
1. Additional Assessments.....	<u>45</u>
2. Assessments.....	<u>45</u>
3. Customer History Report Fee.....	<u>45</u>
4. Customer Service Inspection Fee.....	<u>45</u>
5. Easement Fee.....	<u>45</u>
6. Equipment Damage Fee.....	<u>45</u>
7. Equity Buy-In Fee.....	<u>46</u>
8. Franchise Fee Assessment.....	<u>46</u>
9. Groundwater District Production Fee.....	<u>46</u>
10. Information Copy Fee.....	<u>46</u>
11. Installation Fee.....	<u>46</u>
12. Late Payment Fee.....	<u>47</u>
13. Line Extension Reimbursement Fee.....	<u>47</u>
14. Membership Fee.....	<u>47</u>
15. Meter Tampering and Damage to Property Penalty.....	<u>47</u>
16. Monthly Charges.....	<u>48</u>
17. Mortgagee/Guarantor Notification Fee.....	<u>49</u>
18. Meter Test Fee.....	<u>49</u>
19. Other Fees.....	<u>49</u>
20. Owner Notification Fee.....	<u>49</u>
21. Reconnect Fee.....	<u>49</u>
22. Regulatory Assessment.....	<u>49</u>
23. Returned Check Fee.....	<u>49</u>
24. Seasonal Reconnect Fee.....	<u>49</u>
25. Service Investigation Fee.....	<u>49</u>
26. Service Trip Fee.....	<u>50</u>
27. Transfer Fee.....	<u>50</u>
Section H. Drought Contingency And Emergency Water Demand Management Plan.....	<u>51</u>

**SHERIDAN WATER SUPPLY CORPORATION
TARIFF - 2024**

- 1. Introduction[51](#)
- 2. Public Involvement.....[51](#)
- 3. Coordination with Regional Water Planning Group[51](#)
- 4. Trigger Conditions[51](#)
- 5. Stage Levels of Water Allocations[53](#)
- 6. Initiation and Termination Procedures[54](#)
- 7. Penalties for Violations[54](#)
- 8. Exemptions or Waivers[55](#)
- 9. Implementation.....[56](#)

**SHERIDAN WATER SUPPLY CORPORATION
TARIFF - 2024**

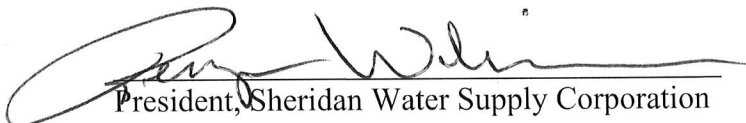
Section A

SECTION A: RESOLUTIONS

THE BOARD OF DIRECTORS OF SHERIDAN WATER SUPPLY CORPORATION ESTABLISHES THAT:

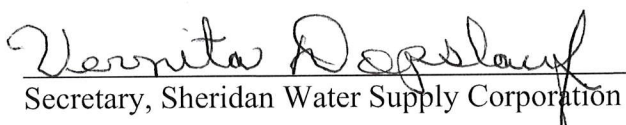
1. This Tariff of the Sheridan Water Supply Corporation, serving in Colorado County, consisting of Sections A through H, is adopted and enacted as the current regulations and policies effective as of **January 1, 2024**.
2. Only those preexisting written contracts or agreements executed by the present or previous Board of Directors shall remain in effect unless the contract or agreement requires compliance with changes of the tariff from time to time.
3. The revision of this tariff does not prohibit or limit the Corporation from enforcing previous penalties or assessments from before the current effective date.
4. An official copy of this and all policies or records shall be available during regular office hours of the Corporation and a copy may be viewed on the Corporation's website. The Secretary of the Corporation shall maintain the original copy as approved and all previous copies for exhibit.
5. Rules and regulations of state or federal agencies having jurisdiction shall supersede any terms of this policy. If any section, paragraph, sentence, clause, phrase, word, or words of this policy are declared unconstitutional or invalid for any purpose, the remainder of this policy shall not be affected.
6. This tariff has been adopted in compliance with the Open Meetings Act, Chapter 551 of the Texas Government Code.

PASSED and APPROVED this **6th day of November, 2023**.



President, Sheridan Water Supply Corporation

SEAL (if applicable)



Secretary, Sheridan Water Supply Corporation

Date Approved/Amended November 6, 2023

SECTION B: STATEMENTS

1. **Organization.** The Sheridan Water Supply Corporation (“Corporation” or “WSC”) is a member-owned, nonprofit corporation incorporated pursuant to the Texas Water Code Chapter 67, and the provisions of the Texas Business Organizations Code applicable to member owned member controlled nonprofit corporations for the purpose of furnishing potable water and or sewer utility service. Corporation operating policies, rates, and regulations are adopted by the Board of Directors elected by the Members of the Corporation.
2. **Non-Discrimination Policy.** Membership in the Corporation and service is provided to all Applicants who comply with the provisions of this Tariff regardless of race, creed, color, national origin, sex, disability, or marital status.
3. **Policy and Rule Application.** These policies, rules, and regulations apply to the water and sewer services provided by the Corporation. Failure on the part of the Member, Customer, or Applicant to observe these policies, rules, and regulations gives the Corporation the authority to deny or discontinue service according to the terms of this Tariff as amended from time to time by the Board of Directors of the Corporation.
4. **Corporation Bylaws.** The Corporation Members have adopted bylaws which establish the make-up of the Board of Directors and other important regulations of the Corporation. The bylaws are on file at the Corporation’s office.
5. **Fire Protection Responsibility.** The Corporation does not provide nor imply that fire protection is available throughout the distribution system, except where expressly required by municipal ordinance or agreed to by WSC. All hydrants or flush valves are for the operation and maintenance of the system and may be used by authorized fire departments in accordance with a contract with the Corporation to supply water for use in fire suppression. The Corporation reserves the right to remove any hydrant, due to improper use or detriment to the system as determined by the Corporation, at any time without notice, refund, or compensation to the contributors unless such hydrants are installed pursuant to the terms of a Nonstandard Service Contract as provided for in [Section F](#), in which event the terms and conditions of the Contract shall apply.
6. **Damage Liability.** The Corporation is not liable for damages caused by service interruptions, events beyond its control, and for normal system failures. The limit of liability of the Corporation is the extent of the cost of service provided. By acceptance of Membership, the Member consents to waiver of such liability.
7. **Information Disclosure.** The records of the Corporation shall be kept in the Corporation office in Sheridan, Texas. All information collected, assembled, or maintained by or for the Corporation shall be disclosed to the public in accordance with the Texas Public Information Act and other applicable law. **In no event and under no circumstances shall the Corporation disclose the Social Security Number of any member or customer to any person other than an employee of the Corporation.** Chapter 182, Subchapter B of the Texas Utilities Code makes confidential a water utility customer’s address, telephone number,

**SHERIDAN WATER SUPPLY CORPORATION
TARIFF - 2024**

Section B

account records, and information relating to the volume or units of utility usage, or the amounts billed to or collected from the individual for utility usage. However, an individual customer may request in writing that this information be released upon request. The Corporation shall give its applicants and customers notice of their right to request disclosure of this information under this policy. The confidentiality provision in Chapter 182, Subchapter B of the Texas Utilities Code does not prohibit the utility from disclosing this information to an official or employee of the state or a political subdivision of the state acting in an official capacity or an employee of the Corporation acting in connection with the employee's duties. Further, such confidentiality does not prohibit the Corporation from disclosing the name and address of each member entitled to vote on a list to be made available to the Corporation's voting members, or their agents or attorneys, in connection with a meeting of the Corporation's members.

8. ***Customer Notice Provisions.*** The Corporation shall give written notice of monthly rate changes by mail or hand delivery to all customers at least 30 days prior to the effective date of the new rate. The notice shall contain the old rates, new rates, effective date of the new rate, date of Board authorization, and the name and phone number of the Corporation's contact person designated to address inquiries about the rate change.

9. ***Grievance Procedures.*** Any Member of the Corporation or individual demonstrating an interest under the policies of this Tariff in becoming a Member of the Corporation shall have an opportunity to voice concerns or grievances to the Corporation by the following means and procedures:
 - a. By presentation of concerns to the Corporation's manager or authorized staff member. If not resolved to the satisfaction of the aggrieved party, then,
 - b. By presenting a letter to the Board of Directors stating the individual's grievance or concern and the desired result.
 - c. The Board of Directors shall respond to the complaint by communicating the Board's decision in writing.
 - d. Any charges or fees contested as a part of the complaint in review by the Corporation under this policy shall be suspended until a satisfactory review and final decision has been made by the Board of Directors.

10. ***Customer Service Inspections.*** The Corporation requires that a customer service inspection certification be completed prior to providing continuous water service to new construction and for all new members as part of the activation of standard and some nonstandard service. Customer service inspections are also required on any existing service when the Corporation has reason to believe that cross-connections or other potential contaminant hazards exist, or after any material improvement, correction, or addition to the members' water distribution facilities. This inspection is limited to the identification and prevention of cross connections, potential contaminant hazards and illegal lead materials. (30 TAC 290.46(j)) (See Tariff [Section G.4.](#))

11. ***Submetering Responsibility.*** Submetering and Non-Submetering by Master Metered Accounts may be allowed in the Corporation's water distribution or sewer collection system provided the Master Metered Account customer complies with the Public Utility Commission,

**SHERIDAN WATER SUPPLY CORPORATION
TARIFF - 2024**

Section B

Chapter 24, Subchapter I rules pertaining to Submetering. The Corporation has no jurisdiction or responsibility to the tenants; tenants receiving water under a Master Metered Account are not considered customers of the Corporation. Any interruption or impairment of water service to the tenants is the responsibility of the Master Metered Account Customer. Any complaints regarding submetering should be directed to the Public Utility Commission.

12. ***Voluntary Contribution Policy.*** The Corporation's board has approved and set up guidelines for accepting Voluntary Contributions on Behalf of Emergency Service Providers in our service area. The policy adopted sets up the guidelines for collection, accounting, and distribution of funds to the respective local Emergency Service Response entities. (Texas Water Code Sections 13.143 & 67.017).
13. ***Prohibition Against the Resale of Water.*** The meter and/or sewer connection is for the sole use of the Member or customer and is to provide service to only one (1) dwelling or one (1) business. Extension of pipe(s) or hoses to share or resell water to any other persons, dwellings, businesses, or property, etc., is strictly prohibited.
14. ***Plumbing Standards.*** The Corporation adopts applicable sections of the most recent Uniform Plumbing Code as guidance in the design, installation, and maintenance of plumbing systems and service facilities connecting or connected to the utility's water facilities, to the extent appropriate under the applicable statutes and regulations governing public water and sewer utility systems. Any Member may be required to retrofit plumbing systems and service facilities as determined to be necessary by the Corporation for the purposes of compliance with the Uniform Plumbing Code. The piping and other equipment on the premises furnished by the Member or customer will be maintained by the Member or customer at all times in conformity with the requirements of the TCEQ, the Uniform Plumbing Code, any applicable municipal plumbing codes and with the service rules and regulations of the Corporation. Where conflicts arise, the more stringent standard shall be followed.

SECTION C: DEFINITIONS

Applicant – A person, partnership, cooperative corporation, corporation, agency, or public or private organization of any type applying for service with the Sheridan Water Supply Corporation. A person must have reached age of majority (18) in Texas to apply for service. (Section 129.001, Civil Practice & Remedies Code).

Base Rate – The monthly charge assessed each Member/customer for the opportunity of receiving service. The Base Rate is a fixed rate based upon the meter size as set forth in the equivalency chart in [Section G](#).

Board of Directors – The governing body elected by the Members of the Sheridan Water Supply Corporation that is vested with the management of the affairs of the Corporation. (Section 22.001(1), Texas Business Organizations Code).

Bylaws – The rules pertaining to the governing of the Sheridan Water Supply Corporation adopted by the Corporation Members. (Section 22.001(2), Texas Business Organizations Code).

Certificate(s) of Convenience and Necessity (CCN) – The authorization granted under Chapter 13 Subchapter G of the Texas Water Code for Sheridan Water Supply Corporation to provide water and/or sewer utility service within a defined territory. Sheridan Water Supply Corporation has been issued Certificate Number(s) 10987- Water CCN. Territory defined in the CCN shall be the Certificated Service Area. (See Tariff [Section D](#). Certificated Service Area Map(s)).

Corporation – The Sheridan Water Supply Corporation. ([Section B. 1](#) of this Tariff).

Developer – Any person, partnership, cooperative corporation, corporation, agency, or public or private organization who subdivides land or requests more than two water or sewer service connections on a single contiguous tract of land [as defined in Section 13.2502 (e)(1) of the Texas Water Code].

Disconnection of Service – The discontinuance of water or sewer service by the Corporation to a Member/Customer.

Easement – A private perpetual dedicated right-of-way for the installation of water and or sewer pipelines and necessary facilities which allows access to property for future operation, maintenance, facility replacement, facility upgrades, and/or installation of additional pipelines (if applicable) for both service to an Applicant and system-wide service. This may also include restrictions on the adjacent area to limit the installation of sewer lines or other facilities that would restrict the use of any area of the easement. (See Sample Application Packet, [Form-RUS-TX 442-8](#) (Rev. 6-06) or [Form RUS-TX 442-9](#) (Rev. 6-06)) The easement will be filed in the real property records of the appropriate county or counties.

Equity Buy-In Fee – Each Applicant for new service where a new service tap is necessary shall be required to achieve parity with the contributions to the construction or acquisition of the Corporations assets related to capacity that have been made previously by existing Members. This

**SHERIDAN WATER SUPPLY CORPORATION
TARIFF - 2024**

Section C

fee shall be calculated annually after receipt of the system audit and assessed prior to providing (or reserving service for nonstandard service applicants) on a per service unit basis for each property and shall be assigned and restricted to that property for which the service was originally requested. See Tariff [Section G. 7.](#)

Final Plat – A complete plan for the subdivision of a tract of land showing or referencing Local Tax Appraisal Maps, access to public road(s), number and size of lots, location of dedicated water/sewer easements, and location(s) of lakes, streams, or rivers through the property. The Sheridan Water Supply Corporation shall determine if a plat submitted for the purpose of this Tariff shall qualify as a final plat. For purposes of evaluating Subdivision service requests under Section F. the Corporation may accept preliminary plats or plats awaiting final approval pending execution of agreement for service by the Corporation.

Hazardous Condition – A condition that jeopardizes the health and welfare of the Members/Customers of the Corporation as determined by the Corporation or regulatory authority.

Indication of Interest Fee – A fee paid by a potential Member of the Corporation for the purpose of determining the feasibility of a construction and /or expansion project. The Indication of Interest Fee may be converted to a Membership Fee upon determination that service to the Applicant is feasible and available. This also applies to applicants applying for, or receiving, Temporary Service. See Tariff [Section E. 10 b.](#)

Installation Fee - A fee charged for all costs necessary for installation of the type of service requested. (See [Section G.](#) for breakdown of costs included in the fee).

Liquidated Membership – A Membership that has been canceled due to delinquent charges or for other reasons as specified in this Tariff. (See [Section E.19 e.](#))

Member – Any person, partnership, cooperative corporation, corporation, agency, or public or private organization who holds a membership in the Corporation and who is a record owner of fee simple title to the property in an area served by the water supply or sewer service corporation or a person who is granted a membership and who either currently receives or will be eligible to receive water or sewer utility service from the corporation. An Applicant must be qualified for service and must have been certified as a Member in accordance with the Corporation’s Tariff before service will be activated. (Texas Water Code Section 13.002(11), Texas Water Code Section 67.016(d)).

Membership – A non-interest-bearing stock or right of participation purchased from the Corporation evidencing a Member’s interest in the Corporation. (See Tariff Section [E.19](#) and Texas Business Organizations Code Sections 22.151(c)).

Membership Fee – A fee qualified as such under the terms of the tariff and the bylaws of the Corporation assigned to the real estate designated to receive service. The membership fee shall be refundable upon termination of service and surrendering the Membership. The membership fee cannot be more than 12 times the minimum monthly base rate.

Public Utility Commission (PUC) – State regulatory agency having jurisdiction over water and

**SHERIDAN WATER SUPPLY CORPORATION
TARIFF - 2024**

Section C

sewer service utilities and appellate jurisdiction over the rates and fees charged by Nonprofit Water and Sewer Service Corporations.

Proof of Ownership – For the purpose of this tariff, applicants for service and membership must provide proof of ownership (Deed) of the real estate. (See Texas Property Code, Title 3, Chapter 12, Section 12.001 and 12.0011).

Rural Utilities Service (RUS) – An agency of the United States Department of Agriculture Rural Development Mission Area that provides loan and grant funds for development of rural water and sewer systems serving communities with a population of less than ten thousand (10,000) people.

Renter – A customer who rents or leases property from a Member or who may otherwise be termed a tenant. (See Tariff Section [E. 18](#)).

Re-Service – Providing service to an Applicant at a location for which service previously existed and where there is an existing setting for a meter. Costs of such re-servicing shall be based on justifiable expenses in connection with such re-servicing. See Tariff [Section E. 1. b](#).

Service Application and Agreement – A written agreement between the Member/Applicant and the Corporation defining the specific type of service requirements requested on the current service application and agreement form, and the responsibilities of each party required before service is furnished.

Service Investigation Fee – A fee for costs associated with determining if service is available and determining cost of service. (See Tariff Sections [F. 3. \(c\)](#), [F. 4.](#), and [G. 26](#)).

Service Trip Fee - A fee charged for any service call or trip to the Member's tap as a result of a request by the Member or tenant for response to damage of the Corporation's or another Member's facilities; for customer service inspections due to suspicion of meter tampering, bypass or diversion of service; or for the purpose of disconnecting or collecting payment for services.

Service Unit – The base unit of service used in facilities design and rate making. For the purpose of this Tariff, a service unit is a 5/8" X 3/4" water meter. Sewer facilities are designed, and rates are based on the basis of population served or demand. (See Tariff Section [G. 7](#) and [G. 14](#)).

Subdivide – To divide the surface area of land into lots or tracts intended primarily for residential use. (Texas Local Government Code Section 232.021(11)).

Subdivider or Person who Subdivides Land– An individual, firm, corporation, or other legal entity that owns any interest in land and that directly or indirectly subdivides land into lots as a part of a common promotional plan in the ordinary course of business. (See Texas Local Government Code Sections 212.012(i)(2) & 232.021(12) Definitions and [Section F., Part II](#)).

Subdivision – An area of land that has been subdivided into lots or tracts. (Local Government Code Section 232.021(13) Definitions).

**SHERIDAN WATER SUPPLY CORPORATION
TARIFF - 2024**

Section C

Tap fee – all current labor and materials necessary to provide individual metered water or wastewater service.

Tariff – The operating policies, service rules, service extension policy, service rates, and water use restriction policies adopted by the Board of Directors. A copy of this Board-approved tariff shall remain on file at the Corporation office and as required by law at the State Office of the PUC.

Temporary Service – The classification assigned an applicant that is in the process of construction. This could also apply to service for uses other than permanent (agricultural, road construction, drilling, livestock, etc.). The Board will set the length of time associated with this classification. This classification will change to permanent service after requirements in Tariff Section [E. 25](#), [E. 26](#), [E. 27](#), and [E. 28](#) are met. Applicant must have paid an Indication of Interest Fee.

Texas Commission on Environmental Quality (TCEQ) – State regulatory agency having jurisdiction over drinking water, water supply and water quality issues for Nonprofit Water and Sewer Service Corporations.

Transfer Fee - A fee assessed by the Corporation for costs associated with transferring membership. (See Tariff [Section E. 19. c.](#), [Section G. 28](#) and Texas Water Code Section 67.016).

Transferee – An Applicant receiving a Sheridan WSC Membership by legal means from a Transferor desiring to forfeit and transfer current rights of Membership to another person or entity. (See Tariff [Section E. 19. c.](#), [Section G. 28](#) and Texas Water Code Section 67.016).

Transferor – A Member who transfers Membership by legal means to another person or entity desiring to qualify for service at a property for which the Membership is currently issued or to the Corporation. (Texas Water Code, Section 67.016).

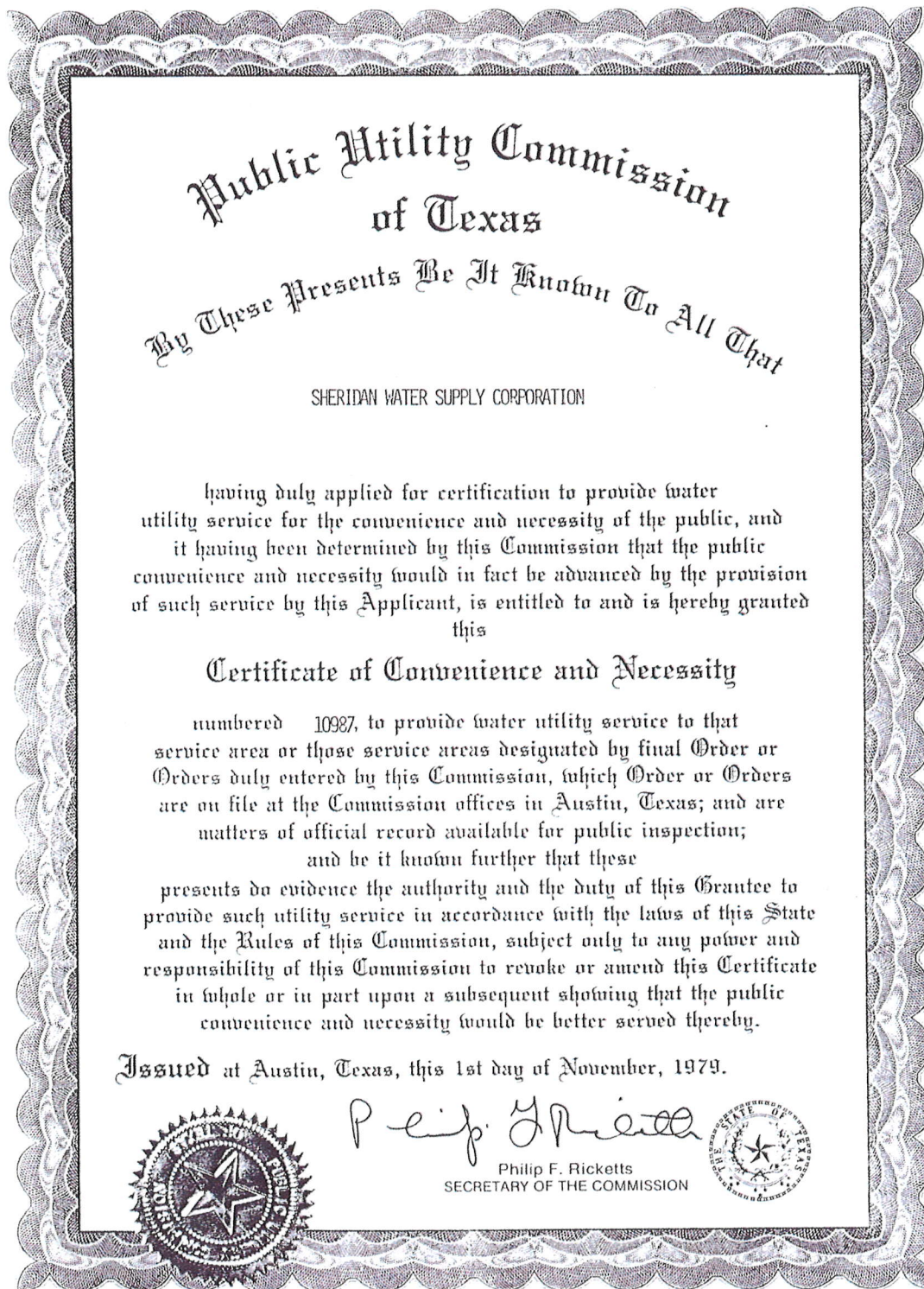
Usage – Amount billed for water or sewer service based on actual or estimated usage.

1. **Actual Usage** – Amount billed or to be collected based on actual meter reading.
2. **Estimated Usage** – Amount billed or to be collected based on either the member's historical average usage for the prior month or for the same month of the prior year where date is available. (See [Section E.5.b.](#); see also PUC Rules 16 TAC §24.165(i) regarding estimated bills).

Water Conservation Penalty – A penalty that may be assessed under [Section H](#) of this Tariff to enforce customer/member water conservation practices during drought contingency or emergency water demand circumstances. (See Texas Water Code Section 67.011 (b) and [Section H. 7](#)).

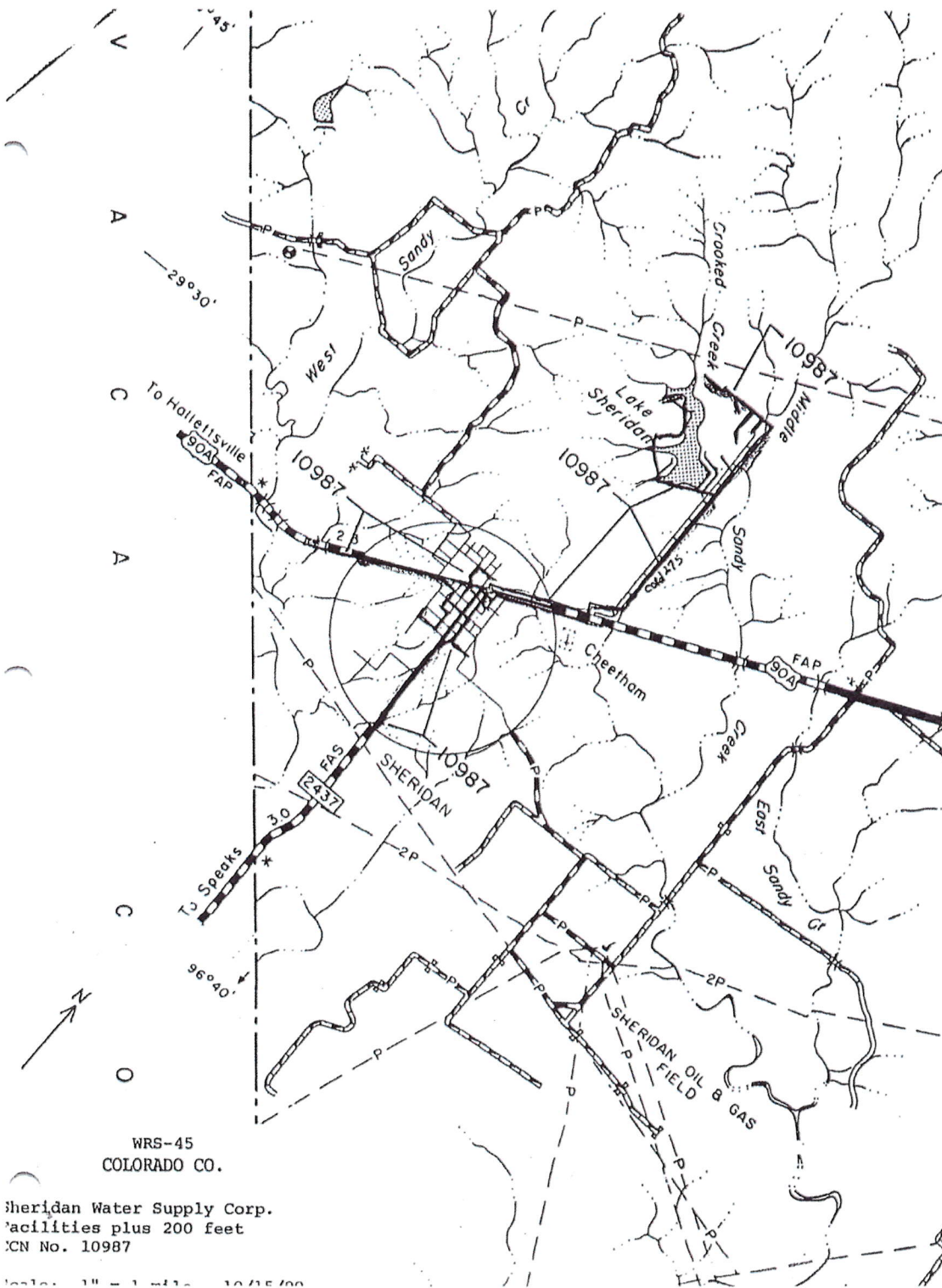
SECTION D: GEOGRAPHIC AREA SERVED

This section includes the area map showing the Corporation's water and wastewater certificated service area.



SHERIDAN WATER SUPPLY CORPORATION
TARIFF - 2024

Section D



SECTION E. SERVICE RULES AND REGULATIONS

1. **Activation of Standard Service.** Before receiving service, applicants must comply with all the following requirements, as applicable:
 - a. **New Tap** – The corporation shall charge a nonrefundable service installation fee as required under [Section G](#). of this tariff. The service installation fee shall be quoted in writing to the Applicant. Any debt owed to the Corporation and all fees shall be paid, or a deferred payment contract signed in advance of installation. (16 TAC 24.163(a)(1)(A))
 - b. **Re-Service** – On property where service previously existed, the corporation shall charge the Membership Fee (where the Membership Fee has been liquidated or refunded), the Reconnect Fee prescribed by [Section G.17](#), any debt owed to the Corporation if the applicant is the person that previously incurred those charges, and other applicable costs necessary to restore service.
 - c. **Performance of Work** – All tap and equipment installations specified by the corporation shall be completed by the corporation staff or designated representative after all requirements for service have been met. The tap for a standard service request shall be completed within ten (10) working days after requirements for service have been met. This time may be extended for installation of equipment for Nonstandard Service Request. (16 TAC 24.161(a)(4), See [Section F](#).)
 - d. **Inspection of Customer Service Facilities** – The property of the Applicant/Member shall be inspected to ensure compliance with the Uniform Plumbing Code and State-required Minimum Acceptable Operating Practices For Public Drinking Water Systems as promulgated by the Texas Commission on Environmental Quality or successor agency. The Member or customer must, at his or her expense, properly install, inspect, test, maintain and provide all required documentation of any approved backflow prevention device required by the Corporation. If the Corporation determines, after conducting a Customer Service Inspection, that any connection on the system poses a potential contamination hazard, such hazard shall be promptly eliminated (30 TAC 290.46(j); [Section I](#). Service Application and Agreement)
2. **Activation of Nonstandard Service.** Activation of Nonstandard Service shall be conducted as prescribed by terms of [Section F](#) of this Tariff. All fees, including Equity Buy-In Fee, Membership Fee, Customer Service Inspection fee, and labor and material fees, must be paid in full up front.
3. **Applicant's or Transferee's Recourse.** In the event the Corporation refuses to serve an Applicant under the provisions of these rules, the corporation must notify the applicant, in writing, on the basis of its refusal. The Applicant may file for an appeal, in writing, with the Board of Directors of the Corporation.

**SHERIDAN WATER SUPPLY CORPORATION
TARIFF - 2024**

Section E

- 4. Back-billing.** If a Member is undercharged the corporation may back-bill the Member. Back-billing may not exceed 12 months unless such undercharge is a result of meter tampering, bypass, or diversion by the customer as defined in this tariff (See 16 TAC Section 24.165(h)). If the underbilling is \$25 or more, the utility shall offer to such member/customer a deferred payment plan option for the same length of time as that of the underbilling.
- 5. Bill Adjustment.**
- a. **Due to Meter Error** - The Corporation shall test any Member's meter upon written request of the member. In the event the meter tests within the accuracy standards of The American Water Works Association, a test fee as prescribed in [Section G](#). of this Tariff shall be imposed. In the event the test results indicate that the meter is faulty or inaccurate, the test fee shall be waived, the meter shall be calibrated or replaced, and a billing adjustment may be made as far back as six (6) months. The billing adjustment shall be made to the degree of the meter's inaccuracy as determined by the test. The Member shall complete a Meter Test Request Form prior to the test.
 - b. **Due to Estimated Billing** - If the Corporation has estimated usage because the Corporation is unable to access the meter due to circumstances beyond the Corporation's control, such as a natural disaster; or because access is hindered or denied by a Member, the Corporation shall adjust the bill once access has been regained and actual usage is determined. (See [Section E.20.a.](#))
- 6. Billing Cycle Changes.** The Corporation reserves the right to change its billing cycles if the workload requires such practice. After a billing period has been changed, the billings shall be sent on the new change date unless otherwise determined by the Corporation.
- 7. Changes in Service Classification.** If at any time the Corporation determines that the customer service needs changed from those originally applied for to a different service classification and the Corporation determines that additional or different facilities are necessary to provide adequate service, the Corporation shall require the Applicant/Member to re-apply for service under the terms and conditions of this Tariff. Applicant/Members failing to comply with this provision shall be subject to the Disconnection with Notice Provisions of this Tariff (See [Section E.11.a.](#))
- 8. Charge Distribution and Payment Application.**
- a. The Base Rate is for the monthly billing period from meter reading to meter reading, accounting for weekends and holidays. Charges shall be prorated for meter installations and service terminations falling during the billing period. Billings for this amount shall be mailed on or about the first of the month preceding the month for which this charge is due. All services shall be subject to this charge whether or not the service is in use by the Member.
 - b. Gallonage Charge shall be billed at the rate specified in [Section G](#) and billing shall be

**SHERIDAN WATER SUPPLY CORPORATION
TARIFF - 2024**

Section E

calculated in one thousand (1,000) gallon increments. Water charges are based on monthly meter readings and are calculated from meter reading to meter reading, accounting for weekends and holidays. Readings used in all billing calculations shall be taken by the Corporation's employees or designated representative.

- c. **Posting of Payments:** All payments shall be posted against previous balances and late fees prior to posting against current billings.
 - d. **Forms of Payment:** The Corporation will accept the following forms of payment: cash, personal check, cashier's check, money order, or credit card (processing fees apply). The Corporation will not accept two-party checks, paychecks, or any other instrument of payment that is not made out to the Corporation. The Corporation reserves the right to require exact change and may refuse to accept payments made using more than \$1.00 in coins. The Corporation will not assess the credit card processing fee associated with credit card payments to those customers which make payment by credit card in accordance with consumer laws.
- 9. *Deferred Payment Agreement.*** The Corporation may offer a deferred payment plan to a Member or rental tenant who cannot pay an outstanding balance in full and is willing to pay the balance in reasonable installments as determined by the Corporation, including any late penalty fees or interest on the monthly balance to be determined as per agreement. Failure to make required and timely payments as provided in any deferred payment agreement will void that agreement and service will be discontinued. The Corporation may consider another deferred payment agreement provided payments will be made by automatic bank draft or credit/debit card. Nonpayment of any amount under an additional deferred payment agreement will cause service to be disconnected immediately and service will not be restored until the account is paid in full and all other charges resulting from the disconnection of service are fully paid. In the event the requestor is a tenant of rental property the Corporation shall notify the owner/member of the deferred payment agreement.

10. *Denial of Service.* The Corporation may deny service for any of the following reasons:

- a. Failure of the Applicant or Transferee to complete all application requirements, including granting an easement, completing all forms, and paying all required fees and charges;
- b. Failure of the Applicant or Transferee to comply with rules, regulations, policies, and bylaws of the Corporation;
- c. Existence of a hazardous condition at the Applicant's property which would jeopardize the welfare of the Members/Users of the Corporation upon connection;
- d. Failure of Applicant or Transferee to provide representatives or employees of the Corporation reasonable access to property, for which service has been requested;

**SHERIDAN WATER SUPPLY CORPORATION
TARIFF - 2024**

Section E

- e. Failure of Applicant or Transferee to comply with all governmental rules and regulations of the Corporation's tariff on file with the state regulatory agency governing the service applied for by the Applicant;
- f. Failure of Applicant or Transferee to provide proof of ownership, to the satisfaction of the Corporation, of property for which the tap has been requested;
- g. Applicant's service facilities are known to be inadequate or of such character that satisfactory service cannot be provided;
- h. Failure of Applicant or transferee to comply with applicable regulations for on-site sewage disposal systems if the Corporation has been requested to deny service by the TCEQ or the TCEQ's designated representative under Chapter 366 of the Texas Health and Safety Code; and
- i. Failure of the Applicant or Transferee to pay any previous outstanding delinquent account(s) in full. This could be delinquencies resulting from the same account location or other service location(s) within the system where the Applicant or Transferee received service. ([See Section E 19.](#))

11. *Disconnection of Service Rules* The following describes the rules and conditions for disconnection of service. Notwithstanding any language to the contrary in the Service Application and Agreement Form, the Corporation may only discontinue service for the reasons set forth in this Section. For the purposes of disconnecting sewer service under these policies, water service will be terminated in lieu of disconnecting sewer service. In instances of nonpayment of sewer service or other violations by a Member who is not a water customer, the Corporation has the option to disconnect the sewer tap or take other appropriate actions.

- a. **Disconnection with Notice** – Water utility service may be disconnected for any of the following reasons after proper notification has been given:
 - 1) **Returned Checks** – The Corporation shall mail, via the U.S. Postal Service, a notice requiring redemption of the returned instrument within ten (10) days of the date of the notice to be made in the Corporation office. Redemption of the returned instrument shall be made by cash, money order, or certified check. Failure to meet these terms shall initiate disconnection of service. Any such instruments returned as insufficient or nonnegotiable for any reason for any two billing periods within a 12-month period shall be considered evidence of bad credit risk by the Corporation. The Member/Customer in violation shall be placed on a “cash-only” basis for a period of 12 months. For the purposes of this subsection, “cash only,” means certified check, money order, or cash.
 - 2) Failure to pay a delinquent account for utility service, failure to timely provide a deposit or other security under [Section E.10.i](#), or failure to comply with the terms of a deferred payment agreement.

**SHERIDAN WATER SUPPLY CORPORATION
TARIFF - 2024**

Section E

- 3) Violation of the Corporation's rules pertaining to the use of service in a manner which interferes with the service of others or the operation of nonstandard equipment if a reasonable attempt has been made to notify the Member and the Member is provided with a reasonable opportunity to remedy the situation;
- 4) Failure of the Member to comply with the terms of the Corporation's Service Agreement, Tariff (including, where appropriate, [Section H](#)), Bylaws, or Special Contract provided that the Corporation has given notice of said failure to comply, and Member has failed to comply within a specified amount of time after notification.
- 5) Failure to provide access or hindering access to the meter under the terms of this Tariff or to property at which water service is received when there is reason to believe that a hazardous condition or policy violation exists for which access is necessary to verify. Conditions that may hinder access include, but are not limited to, fences with locked gates, vehicles or objects placed on top of meters or meter boxes, and unrestrained animals.
- 6) Misrepresentation by any Applicant or Transferee of any fact on any form, document, or other agreement required to be executed by the Corporation.
- 7) Failure of Member to re-apply for service upon notification by the Corporation that Member no longer meets the terms of the service classification originally applied for under the original service application.
- 8) Failure to pay for sewer utility service or solid waste service provided pursuant to the Corporation's Agreement with said provider. 16 TAC 24.167(e), 24.165(g); Texas Water Code 13.147, 13.250(b)(2)).
- 9) Cancellation of membership by Member on an account that the Member holds for water/sewer service to the Member's renter/lessee, even if the renter/lessee has kept the account balance current under an Alternate Billing Agreement. **The cancellation of membership must be in writing and signed by the Member. CORPORATION ASSUMES NO LIABILITY TO RENTER/LESSEE; MEMBER IS SOLELY RESPONSIBLE FOR COMPLIANCE WITH, AND LIABILITY UNDER, ANY FEDERAL, STATE, OR LOCAL LAW CREATING OR PROTECTING RIGHTS OF RENTERS/LESSEES.**
- 10) Violation of any applicable regulation or pertaining to on-site sewage disposal systems if the Corporation has been requested in writing to disconnect service by the TCEQ or the TCEQ's designated representative under Chapter 366 of the Texas Health and Safety Code.
- 11) Failure to pay charges arising from service trip fee as defined in [Section G.27](#),

**SHERIDAN WATER SUPPLY CORPORATION
TARIFF - 2024**

Section E

meter re-read fee, or meter read fee when customer on self-read plan failed to submit their meter reading.

- 12) Failure by a Member to pay for all repair or replacement costs resulting from the Member damaging system facilities including, but not limited to water or sewer lines, service taps, meter boxes, valves, or meters by engaging in activities such as property excavations, installment of a driveway or roadway requiring encasements, lowering or re-routing of lines or system components, or by any other action. The Corporation will provide the Member with notice detailing the extent of the damage, the location of the damage, the cost of repair, and whether the damage occurred on private property or on a public right-of-way. Failure to pay the cost of repair or replacement will result in the Member's service being disconnected in accordance with the Disconnection with Notice Provisions in this Section. Service will remain disconnected until payment is received or an acceptable payment plan is approved.
- 13) Failure to disconnect or secure additional service tap(s) for an RV or other service connection (See [E.24](#) of this Section) after notification by the Corporation of violation of the Prohibition of Multiple Connections.

b. Disconnection Without Notice – Water utility service may be disconnected without notice for any of the following conditions:

- 1) A known dangerous or hazardous condition exists for which service may remain disconnected for as long as the condition exists, including but not limited to a public health nuisance as defined in Texas Health and Safety Code Sections 341.011 or 343.011. If there is reason to believe a dangerous or hazardous condition exists, the Corporation may conduct a customer service inspection (CSI) to verify the hazardous condition and may notify the local county health office. The Corporation will disconnect without notice if the Member refuses to allow access for the purpose of confirming the existence of such condition and/or removing the dangerous or hazardous condition (30 TAC 290.46(i) and 290.46(j)). Service will be restored when a CSI confirms no health hazard exists, the health hazard has been removed or repaired, or the health hazard has been isolated from the Corporation's water system by the installation of a backflow prevention device.
- 2) A line leak on the member's side of the meter is considered a potentially hazardous condition under paragraph b.1, as stated above. If the Corporation conducts a CSI and discovers that the line leak has created a hazardous condition, the Corporation will provide the member up to five (5) business days, or another time period determined reasonable under the circumstances, to repair the line prior to disconnection of service.
- 3) Service is connected without authority by a person/entity who has not made application for service or who has reconnected service without authority following

**SHERIDAN WATER SUPPLY CORPORATION
TARIFF - 2024**

Section E

termination of service for nonpayment; and

- 4) In instances of tampering with the Corporation's meter/sewer tap or equipment, by-passing the meter or equipment, or other diversion of water or sewer service.
- c. **Disconnection Prohibited** – Utility service may not be disconnected for any of the following reasons:
- 1) Failure of the Member to pay for merchandise or charges for nonutility service provided by the Corporation, unless an agreement exists between the Applicant and the Corporation whereby the Member guarantees payment of nonutility service as a condition of service;
 - 2) Failure of the Member to pay for a different type or class of utility service unless a fee for such service is included in the same bill;
 - 3) Failure of the Member to pay charges arising from an underbilling occurring due to any misapplication of rates more than six (6) months prior to the current billing;
 - 4) Failure of the Member to pay the account of another Member as guarantor thereof, unless the Corporation has in writing the guarantee as a condition precedent to service;
 - 5) Failure of the Member to pay charges arising from an underbilling due to any faulty metering, unless the meter has been tampered with or unless such underbilling charges are due under the Inoperative Meters [Section E. 14.](#) of this Tariff.
 - 6) Failure of the Member to pay estimated bill other than a bill rendered pursuant to an approved meter reading plan, unless the Corporation is unable to read the meter due to circumstances beyond its control.
- d. **Disconnection on Holidays and Weekends** – Unless a dangerous condition exists or the Member requests disconnection, service shall not be disconnected on a day, or on a day preceding a day, when personnel of the Corporation are not available to the public for the purpose of making collections and reconnecting service.
- e. **Disconnection Due to Utility Abandonment** – The Corporation may not abandon a Member or a Certificated Service Area without written notice to its Members and all similar neighboring utilities and approval from the PUC.
- f. **Disconnection for Ill Customers** – The Corporation may not discontinue service to a delinquent residential Member or tenant under an alternative billing agreement permanently residing in an individually metered dwelling unit when that Member or tenant establishes that discontinuance of service will result in some person at that residence becoming seriously ill or more seriously ill if service is discontinued. To

**SHERIDAN WATER SUPPLY CORPORATION
TARIFF - 2024**

Section E

avoid disconnection under these circumstances, the Member or tenant must provide a written statement from a physician to the Corporation prior to the stated date of disconnection. Service may be disconnected in accordance with Subsection (a) of this Section if the next month's bill and the past due bill are not paid by the due date of the next month's bill, unless the Member or tenant enters into a Deferred Payment Agreement. The Corporation shall provide notice to an owner of rental property in the event a tenant requests service not be discontinued due to illness as per this subsection.

g. Disconnection of Master-Metered Accounts and Nonstandard Sewer Services – When a bill for water utility services is delinquent for a master-metered service complex (defined as a complex in which a single meter serves two (2) or more residential dwelling units), the following shall apply:

- 1) The Corporation shall send a notice to the Member as required. This notice shall also inform the Member that notice of possible disconnection will be provided to the tenants of the service complex in five (5) days if payment is not rendered before that time.
- 2) At least five (5) days after providing notice to the Member and at least five (5) days prior to disconnection, the Corporation shall post at notices, stating "Termination Notice" in public areas of the service complex notifying the residents of the scheduled date for disconnection of service.
- 3) The tenants may pay the Corporation for any delinquent bill on behalf of the owner to avert disconnection or to reconnect service to the complex.

h. Disconnection of Temporary Service – When an applicant with temporary service fails to comply with the conditions stated in the Service Application and Agreement Form or other rules of this Tariff, service may be terminated with notice.

12. Disputed Bills. In the event of a dispute between the Member and the Corporation regarding any bill, the Corporation shall make and conduct an investigation as required by the particular case and report the results in writing thereof to the Member. All disputes under this Subsection must be submitted to the Corporation, in writing, prior to the due date posted on said bill.

13. Due Dates, Delinquent Bills, and Service Disconnection Date.

- a. The Corporation shall mail all bills on or about the first of the month. All bills are considered the responsibility of each person signing the Service Application and Agreement Form. All bills shall be due and payable upon receipt and are past due beyond the date indicated on the bill (allowing approximately fifteen (15) days to pay), after which time a penalty shall be applied as described in Section G. The time for payment by a political subdivision may be different than your regular due date. (See Texas Government Code 2251.021) A bill is delinquent if not paid on or before the past due date. Payments made by mail will be considered late if postmarked after the past due date. A 15-day grace period may then be allowed for delayed payments prior to

**SHERIDAN WATER SUPPLY CORPORATION
TARIFF - 2024**

Section E

mailing of final notices. Final notices shall be mailed allowing ten (10) additional days for payment prior to disconnection. The ten (10) additional days shall begin on the day the final notice is deposited with the U.S. Postal Service with sufficient postage. If the past due date for the regular or final billing is on a weekend or holiday, the past due date for payment purposes shall be the next day the Corporation office is open for business after said weekend or holiday. For all disputed payment deadlines, the date postmarked on each bill will determine the beginning of each billing cycle or final notice mailings.

- b. The board of directors or general manager may elect to not charge a late fee or disconnect fee in accordance with this Tariff during or after the occurrence of a natural disaster or other incident that impacts the property of members or interrupts the management and operation of the system.
- c. Upon written request, any residential customer 60 years of age or older who occupies the entire premises of a dwelling receiving water utility service from the Corporation shall receive extension of the past due date, without penalty. The extension shall not exceed 10 days beyond the usual 15-day payment period for a total of no more than 25 days from the date the bill is issued. The request may specify extension of the late payment periods for current and subsequent billings. (Texas Utilities Code Sections 182.001 - 182.005) If this request originates from a tenant at a rental property the owner / member will be notified in writing of any extension request.
- d. All insufficient fund checks, accounts closed or money orders that have had a “stop payment order” issued for payment of a water bill will be deemed delinquent as if no payment was received and the meter is subject to disconnection with notice on the regular disconnection day.

14. *Inoperative Meters.* Water meters found inoperative will be repaired or replaced within a reasonable time. If a meter is found not to register for any period, unless by-passed or tampered with, the Corporation shall make a charge for units used, but not metered, for a period not to exceed six (6) months, based on amounts used under similar conditions during the period preceding or subsequent thereto, or during corresponding periods in previous years.

15. *Insufficient Grounds for Refusal of Service.* The following shall not constitute sufficient cause for the refusal of service to an Applicant:

- a. Delinquency in payment for service by a previous member or occupant of the premises to be served;
- b. Failure to pay a bill to correct previous underbilling due to misapplication of rates more than six (6) months prior to the date of application;
- c. Violation of the Corporation’s rules pertaining to operation of nonstandard equipment or unauthorized attachments which interferes with the service of others, unless the

**SHERIDAN WATER SUPPLY CORPORATION
TARIFF - 2024**

Section E

customer has first been notified and been afforded reasonable opportunity to comply with said requirements;

- d. Failure to pay a bill of another member or customer as guarantor thereof unless the guarantee was made in writing to the Corporation as a condition precedent to service; and
- e. Failure to pay the bill of another member or customer at the same address except where the change of customer identity is made to avoid or evade payment of a utility bill.

16. *Master Metered Account Regulations.* An apartment building, condominium, manufactured housing (modular, mobile or RV) community, business center or other similar type enterprise may be considered by the Corporation to be a single commercial facility if the owner applies for a meter as a “master metered account” and complies with the requirements set forth in PUC rules, this Tariff and applicable law. The Corporation may allow master metering and/or nonstandard sewer service to these facilities at an Applicant’s request. (16 TAC (24.281(e)(1)).

17. *Members and Renters.* Any Member having complied with the requirements of this Tariff, renting or leasing property designated to receive service according to the terms of this tariff to other parties, is responsible for all charges due the Corporation. The membership for rental or leased properties shall be in the name of the Member as required by this Tariff. The Corporation may bill the renter or lessee for utility service (at Member Request) as a third party, but the Member is fully responsible for any and all unpaid bills left by the renter/lessee. The Member shall be required to sign an Alternate Billing Agreement if the Member requests that the tenant be billed for utility service. The Member shall take responsibility for any necessary deposits from the renter/lessee to ensure payment of a past due bill. The Corporation will notify the Member of the renter’s past due payment status. Such notification will be subject to a service charge.

If at any time the Member requests that membership be canceled thereby discontinuing service to an occupied rental property, the Corporation shall provide written notice to the renter or lessee a minimum of five (5) days prior to the scheduled disconnection date. The Member is hereby required to maintain with the Corporation at all times the name and current mailing address of the Member’s renter or lessee. The Corporation shall be deemed to have complied with this subsection if the Corporation provides timely notice to the renter or lessee using the last-known mailing address as provided by the Member.

18. *Membership.*

- a. **Eligibility** - Eligibility for Membership shall not guarantee service to the Applicant or Transferee; however, qualification for service is a prerequisite to Membership eligibility for new Applicants or continued Membership for Transferees.
- b. **Membership** - Upon qualification for service, qualification for Membership, payment of the required fees, and any debt owed to the Corporation, the Corporation shall certify the Applicant as a Member. The Membership shall entitle the Member to one (1)

**SHERIDAN WATER SUPPLY CORPORATION
TARIFF - 2024**

Section E

connection to the Corporation's water/sewer utility service and one (1) share of Corporation Stock. The Membership entitles the Member to one (1) vote in the election of directors and in such other matters requiring the approval of the Corporation's Members at any Annual or Special Membership Meeting of the Corporation as prescribed by the Corporation Bylaws. Ownership of more than one (1) Membership shall not authorize the Member to cast more than one (1) vote at any annual or special meeting. Each Membership and Stock thereby represented may be assigned to the specified parcel of land originally designated to receive service at the time of application. (Texas Water Code Section 67.016)

c. **Transfers of Membership.** – (Texas Water Code Section 67.016)

- 1) A Member or executor of estate (by court order or other legal instrument) is entitled to transfer Membership in the Corporation only under the following circumstances:
 - (a) The Membership is transferred by will to a person related to the Transferor within the second degree by consanguinity; or
 - (b) The Membership is transferred without compensation to a person related to the Transferor within the second degree by consanguinity; or
 - (c) The Membership is transferred without compensation or by sale to the Corporation; or
 - (d) The Membership is transferred as a part of the conveyance of real estate from which the Membership arose.
- 2) In the event that Membership is transferred pursuant to the provisions of Subsection [19. c. \(1\)](#) of this Section, such transfer shall not be completed or recorded on the books and records of the Corporation until such time as the transferor has provided satisfactory evidence to the Corporation of such transfer. A transfer of Membership shall be considered a new application for service and is not binding on the Corporation until such transfer has been approved as provided by [Subsection 19. c. 3](#) of this Section.
- 3) Qualifications for service upon transfer of Membership set forth in [Subsection 19.c.\(1\)](#) of this and [19.c.\(2\)](#) of this Section shall be subject to approval of the Corporation and shall be recorded on the books and records of the Corporation only upon the following terms and conditions:
 - (a) The Transferee has completed the required Application Packet including granting the Corporation with a private utility easement on the form provided by the Corporation;
 - (b) The membership has not been fully or partially liquidated; and
 - (c) The Transferee demonstrates satisfactory evidence of ownership of the property designated to receive service and from which the Membership originally arose.

- 4). If the application packet and other information is not completed on the day

**SHERIDAN WATER SUPPLY CORPORATION
TARIFF - 2024**

Section E

transfer of membership is requested the corporation will give the transferee written notice of 10 additional days to produce completed documentation to the corporation office. Service will be disconnected on the day following the 10th day according to disconnection with notice requirements. Additional time may be allowed at the directions of the manager or board.

- d. **Cancellation of Membership** – To keep a Membership in good standing, a Base Rate must be paid monthly to the Corporation, whether or not water is used. Failure to pay this monthly charge to the Corporation shall jeopardize the Member’s Membership standing and give rise to liquidation of the Membership Fee and forfeiture of the Membership. A Member may be relieved of this obligation to pay by surrendering the Membership, properly documented, to the Corporation. The Member shall also complete a Service Discontinuance Request Form prior to termination of service. However, a Member is not relieved of any obligations incurred prior to the date of surrender of a properly endorsed Membership prior to termination of service. Rights to future service at this tap shall be extended on an as-available basis and subject to the terms of the Activation of Service [Section E.1.](#) of this Tariff. (Texas Water Code Section 67.016)
- e. **Liquidation Due to Delinquency** –When the amount of the delinquent charges owed by the Member equals the Membership Fee, the Membership Fee shall be liquidated and the Membership canceled and transferred back to the Corporation. In the event the Member leaves a balance due on an account guaranteed under the terms of a Service Application and Agreement, and the delinquent Member owns more than one Membership, the Corporation may liquidate as many of the Member Guarantor’s Membership Fees as necessary to satisfy the balance due the Corporation, provided proper notice has been given (See Tariff [Section E, Subsection 11. a.](#)). The Corporation shall collect any remaining account balances by initiation of legal action. Reinstatement of service shall be subject to the terms of the Activation of Service [Subsection E.1.b.](#) of this Tariff.
- f. **Cancellation Due to Policy Noncompliance** – The Corporation may cancel a Membership anytime a Member fails to comply with policies of the Corporation, including but not limited to Member’s failure to provide proof of ownership of the property from which the Membership arose. (Texas Water Code Section 67.016)
- g. **Re-assignment of Canceled Membership.**
- 1) The Corporation, upon cancellation of Membership under the provisions of this Tariff, may re-assign the canceled Membership to a person or entity that has legal title to the real estate from which the canceled membership arose and for which water or sewer service is requested (Texas Water Code Section 67.016). Membership will not be re-assigned unless the person or entity that has legal title to the real estate has complied with the corporation’s current rates, charges, and conditions of service, including current membership fee, set forth in the tariff and service application package.

**SHERIDAN WATER SUPPLY CORPORATION
TARIFF - 2024**

Section E

- 2) The Corporation shall reassign a canceled Membership to a person or entity that acquires the real estate from which the Membership arose through judicial or nonjudicial foreclosure. The Corporation will require proof of ownership resulting from the foreclosure and compliance with the corporation's current rates, charges, and conditions of service, including current membership fee, set forth in the tariff and service application package. In the event of foreclosure by a mortgage institution, the Corporation may allow a property management company to acquire the Membership if the management company provides written documentation showing that the management company is legally responsible for the management of the property and it is not feasible for the mortgage institution to be the Member.
- h. **Mortgaging of Memberships** – Nothing herein shall preclude a Member from mortgaging his/her Membership. However, notification to the holder of any security interest (mortgagee/lien-holder) of account status of Member/mortgagor will be provided only upon satisfactory completion of requirements for such conditions under the Membership Mortgage Agreement. Prior to the cancellation of any Membership as provided under [Subsection E. 19. d.](#) (Cancellation of Membership), the Corporation will notify the holder of any security interest in the Membership. The holder of the security interest also must hold a security interest in the real property at which water service is provided under the Membership. The Corporation may transfer the Membership to the holder of such security interest in lieu of cancellation, provided the holder of the security interest pays in full all delinquent and unpaid obligations and provided further that the holder of the security interest has secured title to the real property from which the Membership arose. The Corporation may withhold cancellation of a Membership pending the resolution of any foreclosure proceedings or similar legal proceedings by the holder of the security interest.
- i. **Cancellation and Re-Assignment of Membership as a Result of Bankruptcy Proceedings** – Upon notice of the filing of a petition in bankruptcy, the Corporation may require the posting of a deposit or other form of security, acceptable to the Corporation, as a condition for continuing utility service. Unless special circumstances require otherwise, the amount of security shall equal the amount of charges for the month of greatest use during the preceding 12 months. The Corporation shall not require the payment of any security prior to the expiration of 20 days following the date on which the petition is filed. Failure to provide this security by the date specified by the Corporation may result in termination of service according to the Disconnection with Notice Provisions of [Section E. 11.](#) of this Tariff, with a copy of the notice to the bankruptcy Trustee.
- j. **Cancellation and Re-Assignment of Membership as a Result of Divorce or Death (or Dissolution of Joint Tenancy)** – The Corporation shall transfer the membership to a spouse (or joint tenant) or heir who has been awarded the property designated to receive service. The Corporation must be provided adequate documentation of the ownership rights of the spouse (or joint tenant) or heir requesting transfer, such as final divorce decree, temporary court order, probate decree, affidavit of heirship, or

**SHERIDAN WATER SUPPLY CORPORATION
TARIFF - 2024**

Section E

agreement. In no event shall any membership(s) be transferred if the transferee does not otherwise meet the qualifications for membership and for service.

19. Member's Responsibility.

- a. The Member shall provide access to the meter or sewer tap location as per the easement and service agreement. If access to the meter is hindered or denied preventing the reading of the meter, an estimated bill shall be rendered to the Member for the month; and a notice shall be sent to the effect that access could not be gained. If access is hindered or denied for three (3) consecutive months after proper notification to the Member, then service shall be discontinued and the meter removed with no further notice. Conditions that may hinder access include, but are not limited to, fences with locked gates, vehicles or objects placed on top of meters or meter boxes, and unrestrained animals.
- b. The Member shall be responsible for compliance with all utility, local, and state codes, requirements, and regulations concerning on-site service and plumbing facilities.
 - 1) All water connections shall be designed to ensure against on-site sewage contamination, back-flow or siphonage into the Corporation's water supply. In particular, livestock water troughs shall be plumbed above the top of the trough with air space between the discharge and the water level in the trough. (30 TAC 290.46, Texas Health & Safety Code Chapter 366).
 - 2) For new service applications, a hose connection vacuum breaker must be installed on each faucet or hose bib that is connected to the potable water supply to prevent backflow to the water supply. HVBs must be installed at least 6 inches above the ground surface. Once the HVB is installed, no further adjustments are required.
 - 3) The use of pipe and pipe fittings that contain more than 0.25% lead or solder and flux that contain more than 0.2% lead is prohibited for any plumbing installation or repair of any residential or nonresidential facility providing water for human consumption and connected to the Corporation's facilities. Customer service pipelines shall be installed by the applicant. (30 TAC 290.46; [RUS-TX Bulletin 1780-9](#) (Rev. 05/17)).
 - 4) All pipe and fittings used by the customer to convey sewage from its source to the sewer line must be a minimum of D-3034, SDR-35 or equivalent, 4-inch diameter pipe. No DWV (drain waste and vent) pipe or fittings will be allowed. All joints must be water tight and pipe must be installed to recommended grade. All non-household sewer customers who have potential for dirt, grit, sand, grease, oil, or similar substances must install and maintain a trap ahead of their entrance to the Corporation's sewer collection piping. A double cleanout is required at the property line and required at the house. The Corporation may impose other site-specific requirements. All sewer and potable water service pipeline installations must be a minimum of nine feet apart and meet all applicable plumbing standards

**SHERIDAN WATER SUPPLY CORPORATION
TARIFF - 2024**

Section E

for crossings, etc.

Requirements for Traps:

- (a) Discharges requiring a trap include but are not limited to:
 - (1) grease or waste containing grease in amounts that will impede or stop the flow in the public sewers;
 - (2) oil, flammable wastes;
 - (3) sand, and other harmful ingredients.

- (b) Any person responsible for discharges requiring a trap shall, at his own expense, and as required by the approving authority:
 - (1) Provide equipment and facilities of a type and capacity approved by the approving authority;
 - (2) locate the trap in a manner that provides ready and easy accessibility for cleaning and inspection; and
 - (3) maintain the trap in effective operating condition.

- (c) Approving Authority Review and Approval (By the Board of Directors or Agency):
 - (1) If pretreatment or control is required, the approving authority shall review and approve design and installation of equipment and processes.
 - (2) The design and installation of equipment and processes must conform to all applicable statutes, codes, ordinances and other laws.
 - (3) Any person responsible for discharges requiring pretreatment, flow equalizing or other facilities shall provide and maintain the facilities in effective operating condition at his own expense.

Service shall be discontinued without further notice when installations of new facilities or repair of existing facilities are found to be in violation of this regulation until such time as the violation is corrected.

- c. A Member owning more than one (1) Membership shall keep all payments current on all accounts. Failure to maintain current status on all accounts shall be enforceable as per Service Application and Agreement executed by the Member.

- d. The Corporation's ownership and maintenance responsibility of water supply and metering and sewer equipment shall end at the meter or other service equipment as installed. Therefore, all water usage registering upon and/or damages occurring to the metering equipment owned and maintained by the Corporation shall be subject to charges as determined by the Corporation's Tariff as amended from time to time by the Board of Directors.

The Corporation shall require each Member to have a cut-off valve within two feet of the meter on the Member's side of the meter for purposes of isolating the Member's service pipeline and plumbing facilities from the Corporation's water pressure. The

**SHERIDAN WATER SUPPLY CORPORATION
TARIFF - 2024**

Section E

valve shall meet AWWA standards (a ball valve is preferred). The Member's use of the Corporation's curb stop or other similar valve for such purposes is prohibited. Any damage to the Corporation's equipment shall be subject to service charges. For new taps or for new service at a location with an existing tap, service applicants are required to install a customer owned cut-off valve on the customer's side of the meter or connection. For all new installations, a utility-owned cut-off valve shall be provided on the utility side of the meter. 16 TAC § 24.163(2)(A).

- e. The Member is required to notify the Corporation in writing 48 hours prior to digging or excavation activities along or near water/sewer lines and appurtenances.

20. Meter Relocation. Relocation of services shall be allowed by the Corporation provided that:

- a. The relocation is limited to the existing property designated to receive service;
- b. A current easement for the proposed location has been granted to the Corporation; and
- c. The Member pays the actual cost of relocation plus administrative fees.

22. Meter Tampering and Damage to Property.

- a. For purposes of this Section, the term "Tampering" shall mean meter-tampering, by-passing, or diversion of the Corporation's service equipment, or other instances of diversion, including:
 - 1) Removing a locking or shut-off device used by the Corporation to discontinue service;
 - 2) physically disorienting the meter or sewer tap;
 - 3) attaching objects to the meter or sewer tap to divert service or to by-pass;
 - 4) inserting objects into the meter or sewer tap;
 - 5) other electrical and mechanical means of tampering with, by-passing, or diverting service;
 - 6) connection or reconnection of service without Corporation authorization;
 - 7) connection into the service line of adjacent customers of the Corporation; and
 - 8) preventing the supply or wastewater discharge from being correctly registered by a metering device or sewer tap due to adjusting the valve so that flow is reduced below metering capability.

The burden of proof of Tampering is on the Corporation. Photographic evidence or any other reliable and credible evidence may be used; however, any evidence shall be accompanied by a sworn affidavit by the Corporation's staff when any action regarding Tampering is initiated. A court finding of Tampering may be used instead of photographic or other evidence, if applicable. Unauthorized users of services of the Corporation may be prosecuted to the extent allowed by law under the Texas Penal Code Sections 28.03, 12.21 and 12.22.

- b. If the Corporation determines under subsection (a) that Tampering has occurred, the Corporation shall disconnect service without notice as set forth in [Subsection E.11.b.](#) and charge the person who committed the Tampering the total actual loss to the Corporation, including the cost of repairs, replacement of damaged facilities, and lost

**SHERIDAN WATER SUPPLY CORPORATION
TARIFF - 2024**

Section E

water revenues.

- c. A person who otherwise destroys, defaces, damages or interferes with Corporation property will be charged the total actual loss to the Corporation including but not limited to the cost of repairs, replacement of damaged facilities, and lost water revenues. The Corporation also may prosecute the offending party to the extent allowed under law pursuant to Texas Water Code Section 49.228 and other applicable laws.
- d. In addition to actual damages charged under subsection (b), the Corporation may assess a civil penalty against the offending party. The penalty shall not exceed six (6) times the Base Rate.

23. Ownership of equipment. All water meters and equipment and materials required to provide water or wastewater service to the point of customer connection; water meter or service tap, is the property of the Corporation upon installation, and shall be maintained by the water system only.

24. Prohibition of Multiple Connections to A Single Tap.

- a. No more than one (1) residential, commercial, or industrial service connection is allowed per meter or sewer tap. The Corporation may consider allowing an apartment building or mobile home/RV park to apply as a “Master Metered Account” and have a single meter or sewer tap (See Subsection E. 17.) If the Corporation has sufficient reason to believe a Multiple Connection exists, the Corporation shall discontinue service under the Disconnection with Notice provisions of this Tariff for a first violation and for subsequent violations, service will be disconnected without notice in accordance with Paragraph E. 11. b. (See Sample Application Packet [RUS-TX Bulletin 1780-9](#) (Rev. 05/17))
- b. For purposes of this section, the following definitions shall apply:
 - 1) A “multiple connection” is the connection to any portion of a member’s water or sewer system that is connected to a primary delivery point already servicing one residence, one commercial or industrial facility of a water or sewer line serving another residence or commercial or industrial facility. Water or sewer lines to outbuildings, barns or other accessory structures shall not be consider a multiple connection if: (i) those structures are located on the same tract as the primary delivery point and (ii) such structures are not used as a residence or as a commercial or industrial facility.
 - 2) A “primary delivery point” shall mean the physical location of a meter or sewer tap that is installed in accordance with this Tariff and applicable law and which provides water or sewer service to the residence or commercial or industrial facility of a member.
 - 3) A “residence” shall mean any structure which is being used for human habitation, which may include kitchen and bathroom facilities or other evidence of habitation as defined by the Corporation.
 - 4) “Commercial” facility shall mean any structure or combination of structures at which any business, trade, occupation, profession, or other commercial activity is

**SHERIDAN WATER SUPPLY CORPORATION
TARIFF - 2024**

Section E

conducted. A business conducted within a member's residence or property that does not require water in addition to that provided to the member's residence shall not be considered a separate commercial facility.

- c. The Corporation agrees to allow members in good standing to share water usage with a visitor on their property with a recreation vehicle (RV) or travel trailer for a period of no longer than one month. If the recreation vehicle/travel trailer is being used for a permanent residence, this Tariff requires that an additional membership be secured, and a separate meter installed. If the Member routinely has more than one visitor at a time with recreation vehicles or travel trailers or has multiple visitors throughout the year, the Corporation may require that a second or additional meter(s) be purchased by the Member. The Member must submit a written request to the corporation's business office at least five (5) business days prior to sharing Corporation water under this subsection with a visitor. The Corporation has the right to refuse or deny the shared usage for any reason. The Corporation also has the right to inspect the premises for any potential cross-contamination issues as outlined in the Customer Service Inspection requirements and to ensure that the meter is properly sized for the additional usage at the time of total peak water demand. These requirements pertain to visitors ONLY. No commercial usage where fees for water are charged is allowed. If a Member is found to violate these conditions, the Member will be sent a letter of notice stating that water service will be cut off in ten days if the situation is not corrected.

25. *Requirements for Mandatory Sewer Connection.* – Effective upon the date in Section A upon which this tariff is passed and approved, the installation of any private on-site wastewater treatment or holding facility on property within the Corporation's certificated service area which is less than 300 feet (measured from boundary line of the property to the nearest point of the Corporation's wastewater collection system along a public-right-of-way or utility easement) is prohibited and service to any such property will be provided by the Corporation. This subsection does not apply to any person who has installed an on-site wastewater holding or treatment facility if that on-site facility was installed prior to construction and operation of the Corporation's wastewater collection system within 300 feet of the property or prior to the effective date stated herein. Any costs for connection to the Corporation's wastewater collection system in excess of the standard costs required under Section G must be paid for by the wastewater service applicant. The Corporation must review and approve plans and specifications for any connection prior to construction (Texas Water Code Section 49.234). A person wishing to seek a waiver of this subsection may file a written appeal with the Corporation. The Corporation shall consider the appeal at its next regularly scheduled Board meeting.

26. *Service Entitlement.* The Applicant(s) shall be considered qualified and entitled to water and/or sewer utility service when proper application has been made, terms and conditions of Service and Membership have been met and continue to be met, and all fees have been paid as prescribed (16 TAC 24.161(a)).

27. *Service Location and Classification.* For the purposes of this Tariff, service requested by the Applicant(s) shall be for real estate designated to receive the service provided by the

**SHERIDAN WATER SUPPLY CORPORATION
TARIFF - 2024**

Section E

Corporation. Service shall be through a meter or sewer tap located on that designated real estate unless otherwise approved by the board. Service shall be divided into the following two classes:

- a. **Standard Service** is defined as service on a specific property designated to receive service on an existing pipeline where pipeline or service facility extensions are not required, and special design and/or engineering considerations are not necessary. Typically, this would include 5/8" X 3/4" or 3/4" sized water meter services set on existing pipelines or 4" gravity sewer taps, pressure collection facilities installed or connected to collection lines no more than five feet in depth.
- b. **Nonstandard Service** is defined as any service request which requires a larger meter service, service to a Master Metered Account (see [E. 2.](#) of this section), or an addition to the supply, storage and/or distribution/collection system. The service requirements as prescribed by [Section F.](#) of this Tariff shall be required of the Nonstandard Service Applicant prior to providing service.

28. Service Requirements. The Corporation's Service Application and Agreement Form shall be completed in full and signed by the Applicant(s). Where applicable, in addition to the applicant, any other person sharing an ownership interest in and receiving service at that property shall sign the Service Application and Agreement Form; however, even if the spouse or other person sharing an ownership interest does not sign the Service Application and Agreement Form, they are still responsible for all terms set forth therein, and for any debt obligation related to the account. (See Sample Application [RUS-TX Bulletin 1780-9](#) (Rev. 05/17))

- a. A Right-of-Way Easement Form, Sanitary Control Easement, or other such easement form, required by the Corporation, must be completed by the Applicant for the purpose of allowing future facility additions. (See Sample Application - [RUS-TX Bulletin 1780-9](#) (Rev. 05/17), 30 TAC 290.47 Appendix B.)
- b. The Applicant shall provide proof of ownership to property for which service has been requested in a manner acceptable to the Corporation. Proof of ownership shall consist of warranty deed, deed of trust, or other recordable documentation of title to the real estate designated to receive service. (Texas Water Code Sections 67.016(d) and 13.002(11); *see also* Uniform Partition of Heirs Property Act, Property Code Chapter 23A).
- c. On the request by the property owner or owner's authorized agent, the Corporation shall install individual meters owned by the Corporation in an apartment house, manufactured home rental community, multiple use facility, or condominium on which construction begins after January 1, 2003, unless the Corporation determines that installation of individual meters is not feasible. If the Corporation determines that installation of individual meters is not feasible, the property owner or manager shall install a plumbing system that is compatible with the installation of master meters. The Corporation shall be entitled to the payment of costs, including the costs of master meter installations, as provided in [Section G.](#) The cost of master meter installation

**SHERIDAN WATER SUPPLY CORPORATION
TARIFF - 2024**

Section E

shall be prepaid by the property owner as well as the cost of any additional facilities or supply occasioned by the total water/sewer service demand represented by full occupancy of the property, as determined under applicable provisions of [Section F](#). It shall be the responsibility of the property owner to obtain the memberships required for each individual meter.

- d. Notice of application approval and costs of service determined by the Corporation shall be presented to the Applicant in writing and shall remain in effect for a period not to exceed thirty (30) days. After that time the Applicant must re-apply for service. (16 TAC 24.153 (a)(1)).
- e. If the water main has been located in the public right-of-way and is adjacent to Applicant's property due to the current or previous landowner's refusal to grant easement to the Corporation for the purpose of installing the water main and appurtenances, and the Corporation has documentation of such refusal, the Applicant, prior to receiving the requested service, shall grant the easement(s) required under this Tariff and in addition to the normally required fees for new customer service, shall pay such sums as are reasonably necessary to cap the existing line in the ROW and construct the appropriate line or lines within that easement or easements for the Corporation's system-wide service.
- f. The Corporation shall post on its website or provide to each service applicant or transferee a copy of the Disclosure of Personal Information Request Form. See Texas Utilities Code Section 182.052(c).

SECTION F: DEVELOPER, SUBDIVISION AND NONSTANDARD SERVICE REQUIREMENTS

Part I. General Requirements. **This section details the requirements for all types of nonstandard service requests.**

- 1. Purpose.** It is the purpose of this Section to define the process by which the specific terms and conditions for service to subdivisions and other kinds of Nonstandard Service are determined, including the Nonstandard Service Applicant's and the Corporation's respective costs.

For purposes of the Section, the term "Applicant" shall refer to the individual or entity that desires to secure Nonstandard Service from the Corporation. The Applicant must be the same person or entity that is authorized to enter into a contract with the Corporation setting forth the terms and conditions pursuant to which Nonstandard Service will be furnished to the property. In most cases, the Applicant shall be the owner of real property for which Nonstandard Service is sought. In the event that the Applicant is other than the owner of real property, the Applicant must furnish evidence to the Corporation that it is authorized to request Nonstandard Service on behalf of such owner, or that it otherwise has authority to request Nonstandard Service for the real property.

- 2. Application of Rules.** This Section is applicable to subdivisions, additions to subdivisions, developments, or whenever additional service facilities are required for a single tract of property. Examples of nonstandard services for a single tract of land can include, but are not limited to, road bores, extensions to the distribution system, service lines exceeding 3/4" diameter and service lines exceeding 10 feet. Nonresidential or residential service applications requiring a larger sized meter typically will be considered nonstandard. For the purposes of this Tariff, Applications subject to this Section shall be defined as Nonstandard. This Section may be altered or suspended for planned facility expansions when the Corporation extends its indebtedness. The Board of Directors of the Corporation or their designee shall interpret on an individual basis whether or not the Applicant's service request shall be subject to all or part of the conditions of this Section.

This Section sets forth the general terms and conditions pursuant to which the Corporation will process Nonstandard Service Requests. The specific terms and conditions pursuant to which the Corporation will provide nonstandard service in response to any request will depend upon the nature of such request and may be set forth in a legally enforceable, contractual agreement to be entered into by the Corporation and the service Applicant. The agreement may not contain any terms or conditions that conflict with this Section.

- 3. Nonstandard Service Application.** The Applicant shall meet the following requirements prior to the initiation of a Nonstandard Service Contract by the Corporation:
 - a. The Applicant shall provide the Corporation a completed Nonstandard Service Application (See [Section I](#) this Tariff). The Applicant shall specify any Special Service Needs, such as large meter size, size of subdivision or multi-use facility.

**SHERIDAN WATER SUPPLY CORPORATION
TARIFF - 2024**

Section F

- b. A final plat (See [Section C.](#)) approved by the Corporation must accompany the Application showing the Applicant's requested service area. The plat must be approved by all governmental authorities exercising jurisdiction over lot sizes, sewage control, drainage, right-of-way, and other service facilities. Plans, specifications, and special requirements of such governmental authorities shall be submitted with the plat. Applicants for single taps involving extension or upsizing of facilities shall be required to submit maps or plans detailing the location of the requested extension and details of demand requirements.
 - c. A Nonstandard Service Investigation Fee shall be paid to the Corporation in accordance with the requirements of [Section G.](#) for purposes of paying initial administrative, legal, and engineering fees. The Corporation shall refund any balance that remains after it has completed its service investigation and has completed all legal and engineering services associated with processing a request. In the event such a fee is not sufficient to pay all expenses incurred by the Corporation, the Applicant shall pay to the Corporation upon the Corporation's request all additional expenses that have been, or will be incurred by the Corporation and Corporation shall have no obligation to complete processing of the Application until all remaining expenses have been paid.
 - d. If after the service investigation has been completed, the Corporation determines that the Applicant's service request is for property located, in whole or in part, outside the area described in the Corporation's Certificate of Convenience and Necessity (CCN), service may be extended provided that:
 - 1) The service location is not in an area receiving similar service from another retail Corporation;
 - 2) The service location is not within another retail Corporation's CCN; and
 - 3) The Corporation's CCN shall be amended to include the entirety of Applicant's property for which service is requested. Applicant shall pay all costs incurred by Corporation in amending its CCN, including but not limited to engineering and professional fees. If the service location is contiguous to or within one-fourth (1/4) mile of Corporation's CCN, Corporation may extend service prior to completing the amendment to its CCN, but will do so only upon Applicant's legally enforceable agreement to fully support such amendment (including but not limited to payment of all professional fees, including administrative, legal, surveying and engineering fees incurred by Corporation in securing the amendment).
4. **Design.** The Corporation shall approve the design requirements of the Applicant's required facilities prior to initiation of a Nonstandard Service Contract in accordance with the following schedule:
- a. The Corporation's engineer shall design, or review and approve plans for, all on-site and off-site service facilities for the Applicant's requested service within the Corporation's specifications, incorporating any applicable municipal or other governmental codes and specifications.

**SHERIDAN WATER SUPPLY CORPORATION
TARIFF - 2024**

Section F

- b. The engineer's fees shall be paid out of the Nonstandard Service Investigation Fee under [Section F. 3.](#)
 - c. The engineer shall submit to the Corporation a set of detailed plans, specifications, and cost estimates for the project.
 - d. The Corporation's engineer shall ensure that all facilities for any Applicant meet the demand for service as platted and/or requested in the plans or plat submitted in the application for service. The Corporation reserves the right to upgrade design of service facilities to meet future demands provided however, that the Corporation shall pay the expense of such upgrading in excess of that which is reasonably allocable to the level and manner of service requested by the Applicant.
 - e. The Corporation's engineer will determine the fire flow design for any nonstandard service request, including new subdivisions, based on density, type of structure, and other factors.
5. ***Nonstandard Service Contract.*** Applicants requesting Nonstandard Service may be required to execute a written contract, drawn up by the Corporation's attorney, in addition to submitting the Corporation's Nonstandard Service Application. Said contract shall define the terms of service prior to construction of required service facilities. The service contract may include, but is not limited to:
- a. All costs associated with required administration, design, construction, and inspection of facilities for water/sewer service to the Applicant's service area and terms by which these costs are to be paid.
 - b. Procedures by which the Applicant shall accept or deny a contractor's bid, thereby committing to continue or discontinue the project.
 - c. Terms by which service capacity shall be reserved for the Applicant and duration of reserved service with respect to the demand which the level and manner of the service will have upon the Corporation's system facilities.
 - d. Terms by which the Applicant shall be reimbursed or compensated for fees duplicated in assessments for monthly rates and Equity Buy-In Fees.
 - e. Terms by which the Corporation shall administer the Applicant's project with respect to:
 - (1) Design of the Applicant's service facilities;
 - (2) Securing and qualifying bids;
 - (3) Execution of the Service Contract;
 - (4) Selection of a qualified bidder for construction;
 - (5) Dispensing advanced funds for construction of facilities required for the Applicant's service;
 - (6) Inspecting construction of facilities; and
 - (7) Testing facilities and closing the project.

**SHERIDAN WATER SUPPLY CORPORATION
TARIFF - 2024**

Section F

- f. Terms by which the Applicant shall indemnify the Corporation from all third-party claims or lawsuits in connection with the project.
- g. Terms by which the Applicant shall dedicate, assign and convey to the Corporation all constructed facilities and related rights (including contracts, easements, rights-of-way, deeds, warranties, and so forth) by which the Corporation shall assume operation and maintenance responsibility for the Applicant's project. The Applicant shall also provide reproducible as-built drawings of all constructed facilities. The as-built drawings must verify that all facilities have been properly located within the easements conveyed to the Corporation.
- h. Terms by which the Board of Directors shall review and approve the Service Contract pursuant to current rules, regulations, and bylaws.

6. *Construction of Facilities by Applicant Prior to Execution of Service Contract.* The Corporation and the Applicant must execute a Nonstandard Service Contract prior to the purchase of supplies and materials or initiation of construction of facilities by the Applicant. In the event that the Applicant commences construction of any such facilities prior to execution of a Contract with the Corporation, then the Corporation may refuse to provide service to the Applicant or, in a subdivision, to any person purchasing a lot or home from the Applicant. Alternatively, the Corporation may require full costs of replacing/repairing any facilities constructed without prior execution of a contract from any person buying a lot or home from Applicant. At a minimum, the Corporation will require that all facilities be uncovered by the Applicant for inspection by the Corporation, require that any facilities not approved by the Corporation be replaced, and take any other lawful action determined appropriate by the Board of Directors of the Corporation.

7. *Dedication of Water System Extension/Improvements to Corporation.*

- a. Upon proper completion of construction of all on-site and off-site service facilities (the "Facilities") to meet the level and manner of service requested by the Applicant, the Facilities shall become the property of the WSC. The Facilities shall thereafter be owned and maintained by WSC subject to the warranties required of Applicant under Subsection b. Any connection of individual customers to the Facilities shall be made by the WSC.
- b. Upon transfer of ownership of the Facilities, Applicant shall warrant materials and performance of the Facilities constructed by Applicant for 12 months following the date of the transfer.

8. *Property and Right-of-Way Acquisition.* With regard to construction of facilities, the Corporation shall require private right-of-way easements or purchase of private property as per the following conditions:

- a. If the Corporation determines that right-of-way easements or facility sites outside the Applicant's property are required, the Applicant shall secure easements or else title to

**SHERIDAN WATER SUPPLY CORPORATION
TARIFF - 2024**

Section F

facility sites on behalf of the Corporation. All right-of-way easements and property titles shall be researched, validated, and filed by the Corporation at the expense of the Applicant. (See Sample Application Packet [RUS Form 442-8](#) or [442-9](#) (Rev. 6-06))

- b. All additional costs associated with facilities that must be installed in public rights-of-way on behalf of the Applicant, due to the inability of the Applicant to secure private right-of-way easements, such as road bores and TxDOT approvals shall be paid by the Applicant. Alternatively, Applicant shall pay all costs, including administrative, legal and other professional fees and the condemnation award in the event Corporation secures such private easements or facility sites through eminent domain proceedings.
- c. The Corporation shall require an exclusive dedicated right-of-way easement on the Applicant's property (as required by the size of the planned facilities and as determined by the Corporation) and title to property required for other on-site and off-site facilities.
- d. Easements and facilities sites shall be prepared for the construction of the Corporation's pipelines and facility installations in accordance with the Corporation's requirements at the expense of the Applicant.

9. *Bids for Construction.* The Corporation's consulting engineer shall advertise for bids for the construction of the Applicant's proposed facilities in accordance with generally accepted practices. Plans and specifications shall be made available, with or without charge (as per Engineer's determination), to prospective bidders. Although the Corporation reserves the right to reject any bid or contractor, the Corporation shall generally award the contract to the lowest qualified bidder in accordance with the following criteria:

- a. The Applicant shall execute the Service Contract evidencing willingness to proceed with the project and shall pay all costs in advance of construction associated with the project;
- b. The Contractor shall provide an adequate bid bond under terms acceptable to the Corporation;
- c. The Contractor shall secure adequate performance and payment bonding for the project under terms acceptable to the Corporation;
- d. The Contractor shall supply favorable references acceptable to the Corporation;
- e. The Contractor shall qualify with the Corporation as competent to complete the work (including but not limited to current water/sewer license, OSHA competent person training, and other licenses/certificates as required to complete the project); and
- f. The Contractor shall provide adequate certificates of insurance as required by the Corporation.

**SHERIDAN WATER SUPPLY CORPORATION
TARIFF - 2024**

Section F

10. Pre-Payment for Construction and Service. After the Applicant has executed the Service Agreement, the Applicant shall pay to the Corporation all costs necessary for completion of the project prior to construction and in accordance with the terms of the Nonstandard Service Contract.

11. Construction.

- a. All roadwork pursuant to state, county and/or municipal standards (as applicable) shall be completed prior to facility construction to avoid future problems resulting from road right-of-way completion and excavation. Subject to approval of the requisite authority, approved road sleeves/casings may be installed prior to road construction to avoid road damage during construction of Applicant's facilities.
- b. The Corporation shall, at the expense of the Applicant, inspect the facilities to ensure compliance with Corporation standards.
- c. Construction plans and specifications shall be strictly adhered to, but the Corporation reserves the right to issue change-orders of any specifications, due to unforeseen circumstances during the design phase, to better facilitate construction or operation of the Applicant's facility. All change-order amounts shall be charged to the Applicant.

PART II. Request for Service to Subdivided Property

This section contains additional requirements for Applicants that are Developers as defined in Section C, Definitions.

1. Sufficient Information. Applicants shall provide the corporation sufficient information describing the level and manner of service requested and the timeline for initiation of this service. The following is the minimum information needed for an engineering evaluation of the requested service to the property described in the application.

- a. Completion of requirements described in [Section F. Part I.](#), including completing the Nonstandard Service Application.
- b. Applicant shall provide the Corporation with details concerning access to the property during evaluation of application.
- c. Applicant shall be notified in writing by the Corporation or designated representative the timeframe within which the requested service can be provided and the costs for which the applicant will be responsible, in accordance with the details described on the Applicant's request for service.

2. Service within Subdivisions – The Corporation's obligation to provide service to any customer located within a subdivision governed by this Section is strictly limited to the level and manner of the nonstandard service specified by the Applicant. The Applicant is responsible for paying for all costs necessary for nonstandard service to a subdivision as determined by the Corporation under the provisions of this Tariff and specifically the provisions of this Section.

**SHERIDAN WATER SUPPLY CORPORATION
TARIFF - 2024**

Section F

If the Applicant fails to pay these costs, the Corporation has the right to require payment of these costs by any one or more of the persons purchasing lots or homes within such subdivision before the Corporation is obligated to provide water/sewer service ([Texas Water Code Section 13.2502](#)). In addition, Corporation may elect to pursue any remedies provided by the Nonstandard Service Contract if one has been executed. Applicant is advised that purchasers of lots also may have legal recourse against the Applicant under Texas law, including but not limited to [Texas Water Code Section 13.257](#), and the [Texas Business and Commerce Code Chapter 17, Subchapter E Deceptive Trade Practices & Consumer Protection Act](#).

a) The Applicant must provide the following in addition to all other information otherwise required by this Section:

- (1) Map and legal description of the area to be served using map criteria in [16 TAC 24.233\(a\) \(2\) \(A-G\)](#).
- (2) Time frame for:
 - (a) Initiation of service; and
 - (b) Service to each additional or projected phase following the initial service.
- (3) Detailed description of the nature and scope of the project/development for:
 - (a) Initial needs; and
 - (b) Phased and final needs, including a map showing each phase, and the projected land uses that support the requested level of service for each phase.
- (4) Flow and pressure for anticipated level of fire protection requested, including line size and capacity.
- (5) Specific infrastructure needs for anticipated level of fire protection requested, including line size and capacity.
- (6) Any additional information requested by the Corporation necessary to determine the capacity and the costs for providing the requested service.
- (7) Copies of all required approvals, reports and studies done by or for the Applicant to support the viability of the proposed development.

Applicant must provide reasonably sufficient information, in writing, to allow the Corporation to determine whether the level and manner of service specified by the Applicant can be provided within the time frame specified by the Applicant and to generally determine what capital improvements, including expansion of capacity of the Corporation's production, treatment and/or storage facilities and/or general transmission facilities properly allocable directly to the service request are needed. If the Applicant proposes development in phases, Applicant should specify the level and manner of service and the estimated time frame within

**SHERIDAN WATER SUPPLY CORPORATION
TARIFF - 2024**

Section F

which that service must be provided for each phase, and the Applicant must depict the currently estimated location of each phase on the maps required under [16 TAC Section 24.233\(a\)\(2\)\(A-G\)](#). It is important that the Applicant's written request be complete. A complete service application by the Applicant should include:

- The proposed improvements to be constructed by the Applicant;
- A map or plat signed and sealed by a licensed surveyor or registered professional engineer;
- The intended land use of the development, including detailed information concerning the types of land uses proposed;
- The projected water and/or sewer demand of the development when fully built out and occupied, the anticipated water/sewer demands for each type of land use, and a projected schedule of build-out;
- A schedule of events leading up to the anticipated date upon which service from the CCN holder will first be needed; and
- A proposed calendar of events, including design, plat approval, construction phasing and initial occupancy.

Applicant must establish that current and projected service demands justify the level and manner of service being requested. In making his/her written request for service, the Applicant must advise the Corporation that he/she may request expedited decertification from the PUC.

Upon payment of the required fees, and submission of a complete service application, the Corporation shall review Applicant's service request. If no additional information is required from Applicant, the Corporation will prepare a written report on Applicant's service request, subject to any final approval by the Corporation's governing body (if applicable) which must be completed within the 90 days from the receipt of a complete application and payment of the required fees. The Corporation's written report will state whether the requested service will be provided, whether the requested service can be provided within the time frame specified by the Applicant, and the costs for which the Applicant will be responsible (including capital improvements, easements or land acquisition costs, and professional fees).

In the event the Corporation's initial review of the Applicant's service shows that additional information is needed, the Corporation will notify Applicant of the need for such additional information. Notice of the need for additional information will be made in writing within 30 days of the date the Corporation receives a complete application and payment of the required fees. Applicant shall respond to the Corporation's request for additional information within 15 days of receipt of the Corporation's written request. The Corporation will provide the written report, including any final approval by the Corporation's Board (if applicable) within

**SHERIDAN WATER SUPPLY CORPORATION
TARIFF - 2024**

Section F

90 days from the date the Applicant sufficiently provides the additional information requested by the Corporation.

By mutual written agreement, the Corporation and the Applicant may extend the time for review beyond the 90 days provided for expedited petitions to the PUC.

3. ***Final approval.*** Upon final approval by the Corporation and acceptance of proposal for service by the Applicant, a nonstandard service contract will be executed, and the Corporation shall provide service according to the conditions contained in the Nonstandard Service Contract.

SECTION G: RATES AND SERVICE FEES

Unless specifically defined in this Tariff, all fees, rates, and charges as stated shall be nonrefundable.

- 1. *Additional Assessments.*** In the event any federal, state or local government imposes on the Corporation a “per meter” fee or an assessment based on a percent of water/sewer charges, this fee or assessment will be billed and collected as a “pass through” charge to the customer.
- 2. *Assessments.*** If at the end of the fiscal year, or in the event of emergency repairs, the Board of Directors determines the total amount derived from the collection of water or wastewater charges to be insufficient for the payment of all costs incident to the operation of the Corporation’s system during the year in which such charges are collected, the Board shall make and levy an assessment against each Member of the Corporation as the Board may determine or as may be required by Rural Development, so that the sum of such assessments and the amount collected from water and other charges is sufficient to fully pay all costs of the operation, maintenance, replacement and repayment on indebtedness for the year’s operations. (See [Article XVIII of USDA Model Bylaws, Section 1 Rev. 12-2011](#) or your Corporations bylaws or other governing documents)
- 3. *Customer History Report Fee.*** A fee of \$1.00 per page (black and white copies only) shall be charged to provide a copy of the Member’s record of past account information in response to a Member’s request for such a record.
- 4. *Customer Service Inspection Fee.*** A fee of \$50.00 will be assessed each Applicant before permanent continuous service is provided to new construction.
- 5. *Easement Fee.*** When the Corporation determines that private right-of-way easements and/or facilities sites are necessary to provide service to the Applicant, the Applicant shall be required to make good faith efforts to secure easements on behalf of the Corporation and/or pay all costs incurred by the Corporation in validating, clearing, and retaining such right-of-way in addition to tap fees otherwise required pursuant to the provisions of this Tariff. The costs may include all legal fees and expenses necessary to attempt to secure such right-of-way and/or facilities sites on behalf of the Applicant. (See [Section E. 28.](#); [Section F. 8. b.](#))
- 6. *Equipment Damage Fee.*** If the Corporation’s facilities or equipment have been damaged by tampering, by-passing, installing unauthorized taps, reconnecting service without authority, or other service diversion, a fee shall be charged equal to the actual costs for all labor, material, and equipment necessary for repair, replacement, and other Corporation actions. This fee shall be charged and paid before service is re-established. If the Corporation’s equipment has not been damaged, a fee equal to the actual costs for all labor, material, equipment, and other actions necessary to correct service diversions, unauthorized taps, or reconnection of service without authority shall be charged. All components of this fee will be itemized, and a statement shall be provided to the Member and tenant if an Alternate Billing Agreement is in place. If the Corporation’s facilities or equipment have been damaged due to negligence or unauthorized use of the Corporation’s equipment, right-of-way, or meter shut-off valve, or due

**SHERIDAN WATER SUPPLY CORPORATION
TARIFF - 2024**

Section G

to other acts for which the Corporation incurs losses or damages, the Member shall be liable for all labor and material charges incurred as a result of said acts or negligence.

7. **Equity Buy-In Fee.** In addition to the Membership Fee, each Applicant for new service that requires a new service tap shall be required to achieve parity with the contributions to the construction or acquisition of the Corporation’s assets related to capacity that have been made previously by existing Members. This fee shall be assessed immediately prior to providing service on a per-service unit basis for each service requested and shall be assigned and restricted to that property for which the service was originally requested. This fee shall be set aside for future capacity improvements such as line upgrades, new tanks, treatment, or production. The formula applied to such fee calculated annually after receipt of the system audit is as follows:

Equity Buy-In Fees

	<i>Equity Buy In</i>	<i>Membership Fee (Deposit)</i>	<i>Customer Service Inspection Fee</i>	<i>Total</i>
Water Fees	\$1200.00	\$200.00	\$50.00	\$1450.00
Sewer Fees	\$1200.00	\$200.00 (Add for sewer only)		\$1200.00 if sewer & water \$1400.00 if sewer only
Water & Sewer Fees	\$2400.00	\$200.00	\$50.00	\$2650.00
Not included is the cost of labor and material for Installs and/ or Service Investigation Fees for Non-Standard Service. Labor and Materials will be billed separately after the install and must be paid in full before services are turned on.				

The Water or Sewer Fee for oversized or Master Metered Accounts shall be based on the multiples of meter size equivalences (see Subsection 13 below.)

8. **Information Copy Fee.** A fee for the copying of any public information will be charged to the person requesting that information in compliance with the cost rules of the Texas Government Code Section 552.261 et. seq.

9. **Installation Fee.** The Corporation shall charge an installation fee for service as follows:
- a. **Standard Service** shall include:
 - 1) Tap fee – all current labor and materials necessary to provide individual metered water or wastewater service;
 - 2) engineering fee;
 - 3) legal fee;
 - 4) customer service inspection fee;
 - 5) administrative costs; and
 - 6) any additional site-specific equipment or appurtenances necessary to provide water or wastewater service.

Standard service fees shall be charged on a per tap basis as computed immediately prior to such time as metered service is requested and installed.

- b. **Nonstandard Service** shall include:
 - 1) Facility improvement costs including, but not limited to, tanks, piping, main lines, hydrants, and other labor materials necessary to provide service at the level required

**SHERIDAN WATER SUPPLY CORPORATION
TARIFF - 2024**

Section G

- by Water Code and as requested by the applicant;
 - 2) line and facility inspection fees;
 - 3) administrative costs including, but not limited to, contract administration costs, processing invoices, disbursement of checks to contractors;
 - 4) legal fees, including but not limited to, contract development, easements, water rights, permits, and CCN amendments for the area;
 - 5) engineering fees; and
 - 6) any additional site-specific equipment or appurtenances necessary to provide water or wastewater service as determined by the Corporation under the terms of Section F of this Tariff (includes tap fees).
- c. **Standard and Nonstandard Service Installations** shall include all costs of any pipeline relocations as per [Section E.29.e.](#) of this Tariff.

10. Late Payment Fee. Once per billing period, a penalty of \$25.00 shall be applied to delinquent bills. This late payment penalty shall not be applied to any balance to which the penalty was applied in a previous billing period but shall be applied to any unpaid balance during the current billing period.

All payments need to be received by the 15th of every month by the end of the business day, **or a non-refundable \$25 late fee will be applied.**

If the 15th day of the month falls on a holiday or weekend, the bill is due by the end of the first business day immediately following that holiday or weekend.

11. Membership Fee. At the time the application for service is approved, a refundable Membership Fee must be paid for each service requested before service shall be provided or reserved for the Applicant by the Corporation. The membership fee cannot be more than 12 times the minimum monthly base rate.

- a. The Membership Fee for water service is \$200.00 for each service unit.
- b. The Membership Fee for wastewater service is \$200.00 for each service unit.
- c. If an application for service requests both water and wastewater service, the total Membership Fee shall not exceed \$200.
- d. Membership fee for oversized or Master Metered Accounts shall be based on multiples of meter size equivalence. (See Chart in Subsection 13 below.)

12. Meter Tampering and Damage to Property Penalty. In addition to the Equipment Damage Fee, the Corporation may charge a penalty for “Tampering” as defined in [Section E. 22](#). The penalty may only be assessed against the person who committed the Tampering. The penalty cannot be assessed against the Member for the Tampering committed by their tenant. The penalty shall not exceed six (6) times the Base Rate.

**SHERIDAN WATER SUPPLY CORPORATION
TARIFF - 2024**

Section G

13. Monthly Charges.

a. Base Rate

- 1) Water Service - The monthly charge for standard metered water service is for a 5/8" X 3/4" meter. The 5/8" x 3/4" meter charge is used as a base multiplier for larger nonstandard meters in accordance with the following chart based on American Water Works Association maximum continuous flow specifications:

Water Base Rates
(Effective on January 1, 2024)

Meters by Size	AWWA Standards	Monthly Minimum-Base Rate
5/8" x 3/4"	1	\$33.23
3/4"	1.5	\$49.85
1"	2.5	\$83.08
1-1/2"	5	\$166.16
2"	8	\$265.86
3" Displacement	9	\$299.09
3" Compound	16	\$531.72
3" Turbine	17.5	\$581.57
4" Compound	25	\$830.82
4" Turbine	30	\$996.98
6" Compound	50	\$1,661.64
6" Turbine	62.50	\$2,077.05
8" Compound	80	\$2,658.62
10" Compound	115	\$3,821.76

- 2) Commercial Bulk Water Rate-
 - a. \$1,000 deposit will be charged at the time of application. Any remaining amount after the bill is paid in full will be refunded within 10 business days.
 - b. \$60.00/1,000 gallons
 - c. Must have a credit card on the file along with application, and a copy of Driver License.

**SHERIDAN WATER SUPPLY CORPORATION
TARIFF - 2024**

Section G

- 3) Sewer Service –For Members who receive sewer service from the Corporation, but not water service, the sewer base rate shall be \$45.00 monthly plus the assessment fee. Members who receive water and sewer service from the Corporation are charged for sewer service on a per tap basis as follows:

Sewer Base Rates
(Effective on January 1, 2024)

Meters by Size	AWWA Standards	Monthly Minimum-Base Rate
5/8" x 3/4"	1	\$43.28
3/4"	1.5	\$64.93
1"	2.5	\$108.21
1-1/2"	5	\$216.42
2"	8	\$346.27
3" Displacement	9	\$389.56
3" Compound	16	\$692.55
3" Turbine	17.5	\$757.48
4" Compound	25	\$1,082.11
4" Turbine	30	\$1,298.53
6" Compound	50	\$2,164.21
6" Turbine	62.50	\$2,705.27
8" Compound	80	\$3,462.74
10" Compound	115	\$4,977.69

- b. **Gallonge Charge** – In addition to the Base Rate, a gallonge charge shall be added at the following rates for usage during any one (1) billing period:

1) **Water:**

Inclining Block Tier by gallons	Inclining Block Rate per 1,000 gals
0–2,000	\$3.00
2,001–6,000	\$4.50
6,001–10,000	\$5.50
10,001–20,000	\$6.50
20,001–40,000	\$8.00
40,001–UP	\$9.00

**SHERIDAN WATER SUPPLY CORPORATION
TARIFF - 2024**

2) **Sewer:**

Inclining Block Tier by gallons	Inclining Block Rate per 1,000 gals
0–2,000	\$4.50
2,001–6,000	\$6.50
6,001–10,000	\$8.75
10,001–20,000	\$10.50
20,001–40,000	\$13.00
40,001–UP	\$15.00

c. **Regulatory Assessment** - The Corporation shall, as required by Texas Water Code Section 5.701, collect from each of its retail customers a regulatory assessment equal to one-half of one percent of the charge for retail water or wastewater service. This charge shall be collected in addition to other charges for utility service. This fee is collected on all charges pertaining to Section G. 13. Monthly Charges of this Tariff. 30 TAC 291.76(d))

14. Mortgagee/Guarantor Notification Fee. The Corporation shall assess a fee of \$1.00 for each notification to a Membership lien-holder under agreement prior to Membership cancellation.

15. Other Fees. All services outside the normal scope of utility operations that the Corporation may be compelled to provide at the request of a Member, or the general public shall be charged to the recipient based on the cost of providing such service.

16. Owner Notification Fee. The Corporation shall assess a fee of \$1.00 per notification to a Member of a renter/lessee delinquent account status prior to disconnection of service.

17. Reconnect Fee. The Corporation shall charge a non-refundable fee of \$40.00 for reconnecting service after the Corporation has previously disconnected the service for any reason provided for in this Tariff. The account must be paid in full to be unlocked.

18. Regulatory Assessment. A fee of 0.5% of the amount billed for water/sewer service will be assessed each customer; this assessment is required under Texas law and TCEQ regulations. The regulatory assessment will not be collected from state agencies, wholesale customers, or buyers of non-potable (not drinkable) water. (Ref. TCEQ RG-199 revised Sept. 2017; TCEQ Section 291.76 (c)).

19. Returned Check Fee. In the event a check, draft, or any other similar instrument is given by a person, firm, corporation, or partnership to the Corporation for payment of services provided for in this Tariff, and the instrument is returned by the bank or other similar institution as

**SHERIDAN WATER SUPPLY CORPORATION
TARIFF - 2024**

Section G

insufficient or nonnegotiable for any reason, the account for which the instrument was issued shall be assessed a return check charge of \$25.00.

20. Service Investigation Fee. The Corporation shall conduct a service investigation for each service application submitted to the Corporation. **Upon request, or if determined by the Corporation to be necessary, an initial determination shall be made by the Corporation, without charge, as to whether the service request is Standard or Nonstandard.** A service investigation may then be conducted, and the results reported, under the following terms:

- a. All Standard Service requests shall be investigated without charge and all applicable costs for providing service shall be quoted in writing to the Applicant within ten (10) working days of the Corporation's receipt of a completed written application.
- b. All Nonstandard Service requests shall be investigated **only** after the Corporation receives from the Applicant a completed written application; and a fee, determined by the Corporation and appropriate to each project, of sufficient amount to cover all administrative, legal, and engineering fees associated with investigation of the Corporation's ability to deliver service to the Applicant to:
 - (1) provide cost estimates of the project;
 - (2) present detailed plans and specifications as per final plat;
 - (3) advertise and accept bids for the project;
 - (4) present a Nonstandard Service Contract to the Applicant; and
 - (5) provide other services as required by the Corporation for such investigation.
A Nonstandard Service Contract shall be presented to the Applicant within a suitable amount of time as determined by the complexity of the project. (See [Section F.5.](#))

21. Service Trip Fee. The Corporation shall not charge a trip fee for any service call or trip to the Member's tap during business hours as a result of a request by the Member or tenant for response to damage of the Corporation's or another Member's facilities; for customer service inspections due to suspicion of meter tampering, bypass or diversion of service; or for the purpose of disconnecting or collecting payment for services. For service trips that are not during business hours, the Corporation shall charge a trip fee of \$40.00. For any service trip that extends beyond one hour, such as when an extended line location is required, the Corporation shall charge \$40.00 per employee per hour for each additional hour required.

22. Transfer Fee. A fee of \$20.00 shall be assessed for the transfer of any membership.

23. Sewer Reconnection Fee. Sewer Reconnection Fee- \$500.00 Total
(*\$250.00 to dig up and cap off, & \$250.00 to dig up and uncap. This includes the cost of labor, machinery, basic materials, etc.*)

24. Notary Fee. A fee of \$5.00 per signature shall be assessed for the transfer of any membership.

SECTION H: DROUGHT CONTINGENCY AND EMERGENCY WATER DEMAND MANAGEMENT PLAN

1. Introduction

The goal of this plan is to cause a reduction in water use in response to drought or emergency conditions so that the water availability can be preserved. Since emergency conditions can occur rapidly, responses must also be enacted quickly. This plan has been prepared in advance considering conditions that will initiate and terminate the water use restriction program.

A Drought/Emergency Management Committee consisting of two Board Members and the System Manager will monitor usage patterns and public education efforts and will make recommendations to the Board on future conservation efforts, demand management procedures or any changes to this plan. The Committee will develop public awareness notices, bill stuffers, and other methods that will begin and continue as a constant type of reminder that water should be conserved at all times, not just during a drought or emergency. This Committee will also review and evaluate any needed amendments or major changes due to changes in the WSC service area population, distribution system or supply. This review and evaluation will be done on a regular basis of five years unless conditions necessitate more frequent amendments.

The plan will be implemented according to the three stages of water use restrictions as imposed by the Board. Paragraph 4 describes the conditions that will trigger these stages.

2. Public Involvement

Opportunity for the public to provide input into the preparation of the Plan was provided by the Board by scheduling and providing public notice of a public meeting to accept input on the Plan. Notice of the meeting was provided to all customers. In the adoption of this plan, the Board considered all comments from customers.

3. Coordination with Regional Water Planning Group

Being located within the Region K, a copy of this Plan has been provided to that Regional Water Planning Group.

4. Trigger Conditions

The SWSC Board Members are responsible for monitoring water supply and demand conditions on a monthly basis (or more frequently if conditions warrant) and shall determine when conditions warrant initiation or termination of each stage of the plan, that is, when the specified triggers are reached. The Committee will monitor monthly operating reports, water supply or storage tank levels and/or rainfall as needed to determine when trigger conditions are reached. The triggering conditions described below take into consideration: the vulnerability of the water source under drought of record conditions, the production, treatment and distribution capacities of the system, and member usage based upon historical patterns.

**SHERIDAN WATER SUPPLY CORPORATION
TARIFF - 2024**

Section H

a. Stage I - Mild Condition: Stage I water allocation measures may be implemented when one or more of the following conditions exist:

- 1) Water consumption has reached 80 percent of daily maximum supply for three (3) consecutive days.
- 2) Water supply is reduced to a level that is only 20 percent greater than the average consumption for the previous month.
- 3) There is an extended period (at least eight (8) weeks) of low rainfall and daily use has risen 20 percent above the use for the same period during the previous year.

b. Stage II - Moderate Conditions: Stage II water allocation measures may be implemented when one of the following conditions exist:

- 1) Water consumption has reached 90 percent of the amount available for three consecutive days.
- 2) The water level in any of the water storage tanks cannot be replenished for three (3) consecutive days.

c. Stage III - Severe Conditions: Stage III water allocation measures may be implemented when one of the following five conditions exist:

- 1) Failure of a major component of the system or an event which reduces the minimum residual pressure in the system below 20 psi for a period of 24 hours or longer.
- 2) Water consumption of 95 percent or more of the maximum available for three (3) consecutive days.
- 3) Water consumption of 100 percent of the maximum available and the water storage levels in the system drop during one 24-hour period.
- 4) Natural or man-made contamination of the water supply source(s).
- 5) The declaration of a state of disaster due to drought conditions in a county or counties served by the Corporation.
- 6) Reduction of wholesale water supply due to drought conditions.
- 7) Other unforeseen events which could cause imminent health or safety risks to the public.

**SHERIDAN WATER SUPPLY CORPORATION
TARIFF - 2024**

Section H

5. *Stage Levels of Water Allocations*

The stage levels of water allocations are to be placed in effect by the triggers in Paragraph 4. The System shall institute monitoring and enforce penalties for violations of the Drought Plan for each of the Stages listed below. The water allocation measures are summarized below.

a. Stage I - Mild Conditions

- 1) Alternate day, time of day, or duration restrictions for outside water usage allowed. (System will notify Customers which restriction is in effect)
- 2) The system will reduce flushing operations.
- 3) Reduction of customers' water use will be encouraged through notices on bills or other method.

b. Stage II - Moderate Conditions

- 1) All outside water use is prohibited (except for a livestock or other exemption or variance granted under this section).
- 2) Make public service announcements as conditions change via local media (TV, radio, newspapers, etc.).

c. Stage III - Severe Conditions

- 1) All outside watering prohibited.
- 2) Water use will be restricted to a percentage of each member's prior month usage. This percentage may be adjusted as needed according to demand on the system. Notice of this amount will be sent to each customer.
- 3) Corporation shall continue enforcement and educational efforts.

6. *Initiation and Termination Procedures*

Once a trigger condition occurs, the Corporation, or its designated responsible representative, shall, based on recommendation from the Chairperson of the Drought/Emergency Management Committee, decide if the appropriate stage of water use restrictions shall be initiated. The initiation may be delayed if there is a reasonable possibility the water system performance will not be compromised by the condition. If water allocation is to be instituted, written notice to the customers shall be given.

Written notice of the proposed water use restrictions measure shall be mailed or delivered to

**SHERIDAN WATER SUPPLY CORPORATION
TARIFF - 2024**

Section H

each affected customer upon the initiation of each stage. Notice may be sent by email only if the customer chooses the option to receive email notices instead of mailed notices and provides a valid email address. In addition, upon adoption of Stage II or Stage III, a notice will be placed in a local newspaper or announced on a local radio or television station. The customer notice shall contain the following information:

- a. The date water restriction shall begin;
- b. the expected duration;
- c. the stage (level) of water allocations to be employed;
- d. penalty for violations of the water allocation program; and
- e. affected area or areas.

If the water allocation program extends 30 days, then the Chairperson of the Drought/Emergency Management Committee or manager shall present the reasons for the allocations at the next scheduled Board Meeting and shall request the concurrence of the Board to extend the allocation period.

When the trigger condition no longer exists then the responsible official may terminate the water allocations provided that such an action is based on sound judgment. Written notice of the end of allocations shall be given to customers. A water allocation period may not exceed 60 days without extension by action of the Board.

7. *Penalties for Violations*

- a. **First Violation** –The customer/member will be notified by a written notice of their specific violation and their need to comply with the tariff rules. The notice will show the amount of penalty * to be assessed and inform the customer that failure to pay the penalty will result in termination of service. Reconnection will require payment of the penalty and a charge for the service call to restore service. The notice will also inform the customer that additional violations will trigger more severe penalties and may result in termination of service regardless of whether the customer pays the penalties.
- b. **Second Violation** - The Corporation will assess a penalty of \$50.00. The notice of second violation will show the amount of penalty to be assessed and will inform the customer that failure to pay the penalty will result in termination of service to be restored only upon payment of penalty and service call to restore service. The notice will also inform the customer that additional violations will trigger more severe penalties and may result in termination of service regardless of whether the customer pays the penalties.
- c. **Subsequent Violations** - The Corporation will assess an additional penalty of \$50.00 for violations continuing after the Second Violation. The notice of subsequent violation will show the amount of the penalty to be assessed and will inform the violator that failure to pay the penalty will result in termination of service to be restored only upon payment of penalty and service call to restore service. The notice will also inform the customer that the Corporation may also install a flow restricting device in the customer's meter service

**SHERIDAN WATER SUPPLY CORPORATION
TARIFF - 2024**

Section H

to limit the amount of water that will pass through the meter in a 24-hour period. The costs of this procedure will be for the actual work and equipment and shall be paid by the customer. Removal of this device will be considered Meter Tampering and will result in disconnection of service without further notice. The notice of subsequent violation will also inform the customer that additional penalties will be assessed for additional violations; and in addition to penalties, that water service will be terminated for a period of three (3) days regardless of whether the customer pays the penalties for the additional violations.

- d. Termination** – For each continuing violation, the Corporation will assess an additional penalty of \$50.00. Service will also be terminated for a period of three (3) days. The notice of termination will show the date on which water service will be terminated and the date on which service will be restored, unless the customer has failed to pay delinquent penalties, assessments or charges. Service will remain off until any delinquent penalty or other assessment is fully paid including a charge for the service call to restore service

These provisions apply to all customers of the Corporation.

8. Exemptions or Waivers

The Drought/Emergency Management Committee may, in writing, grant temporary variance for existing water uses otherwise prohibited under this Plan if it is determined that failure to grant such variance would cause an emergency condition adversely affecting the health or sanitation for the public or the person requesting such variance and if one or more of the following conditions are met:

- a.** Compliance with this Plan cannot be technically accomplished during the duration of the water supply shortage or other condition for which the Plan is in effect.

Alternative methods can be implemented which will achieve the same level of reduction in water use.

Persons requesting an exemption from the provisions of this Plan shall file a petition for variance with the Drought/Emergency Management Committee within five (5) days after the Plan or a particular drought response stage has been invoked or after a condition justifying the variance first occurs. All petitions for variances shall be reviewed by the Committee and shall include the following:

- Name and address of the petitioner(s).
- Purpose of water use.
- Specific provision(s) of the Plan from which the petitioner is requesting relief.
- Detailed statement as to how the specific provision of the Plan adversely affects the petitioner or what damage or harm will occur to the petitioner or others if petitioner complies with this Plan.

**SHERIDAN WATER SUPPLY CORPORATION
TARIFF - 2024**

Section H

- Description of the relief requested.
- Period of time for which the variance is sought.
- Alternative water use restrictions or other measures the petitioner is taking or proposes to take to meet the intent of this Plan and the compliance date.
- Other pertinent information, as requested by the Committee.

Variations granted by the Committee shall be subject to the following conditions, unless specifically waived or modified by the Committee or Board of Directors:


- Variations granted shall include a timetable for compliance.
- Variations granted shall expire when the water allocation is no longer in effect, unless the petitioner has failed to meet specified requirements. No variance allowed for a condition requiring water allocation will continue beyond the termination of water allocation under Section F. Any variance for a subsequent water allocation must be petitioned again. The fact that a variance has been granted in response to a petition will have no relevance to the Committee's decision on any subsequent petition.

No variance shall be retroactive or otherwise justify any violation of this Plan occurring prior to the issuance of the variance.

9. *Implementation*

The Board establishes a Drought/Emergency Management Committee by Resolution, the chairperson of which will be the responsible representative to make Drought and Emergency Water Management actions. This Committee will review the procedures in this plan annually or more frequently. Modifications may be required to accommodate system growth, changes in water use demand, available water supply and/or other circumstances.

This plan was adopted by the Board at a properly noticed meeting held on **November 6, 2023.**

Corporation Official 
Title: Board President SWSC